



School Forest: Environmental Learning Center

District Staff Involvement

District Involvement

(8) Design Meetings

- District Leadership Team
- Building Design Committee
 - Donor outreach
- Design team committee site walk through
- The users were involved in all the design meetings



Environmental Learning Center: Exterior Rendering



somerville
architects
engineers

NEXUS
SOLUTIONS

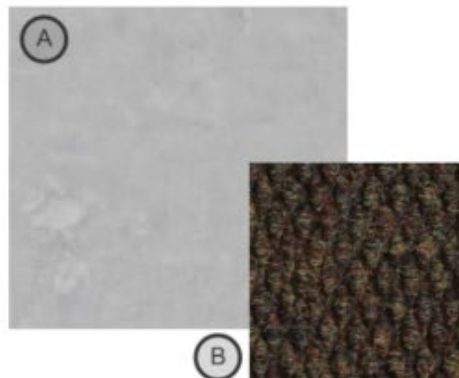


School Forest: Environmental Learning Center

Finish Board

PHOTO DESCRIPTION

- A. Polished concrete floor - salt and pepper finish
- B. Walk off carpet tile for vestibules
- C. Carpet for office and mezzanine
- D. Bathroom wall tile
- E. Main paint color
- F. Accent paint color
- G. Paint for hollow metal door frames
- H. Laminate- vertical casework
- I. Laminate- countertops
- J. Window sills
- K. Wood ceiling stain color



PAINT

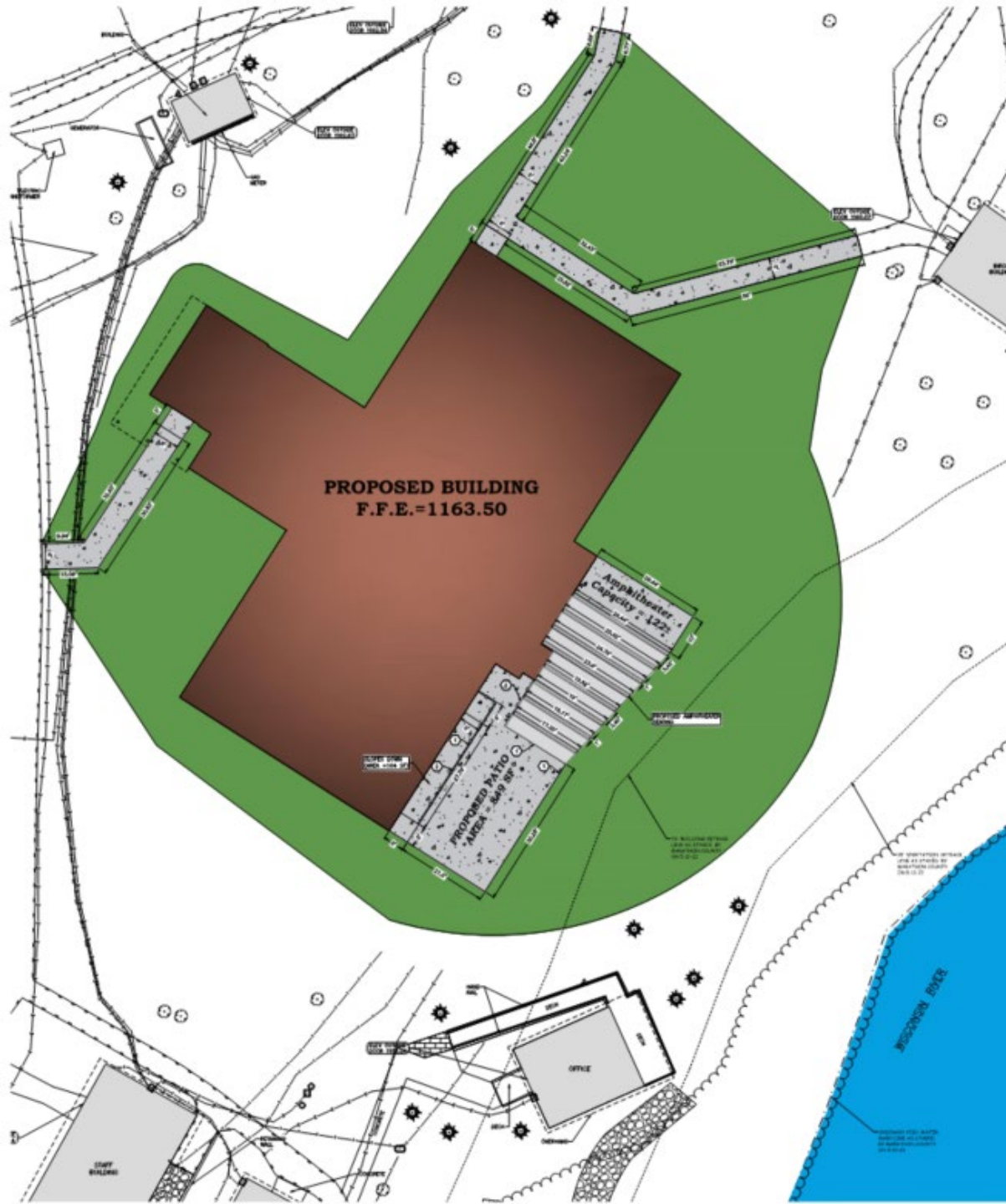


CASEWORK



Design Goals

- Lodge Look
- Welcoming
- Warm colors
- Bringing in nature



School Forest: Environmental Learning Center 95% Design

Noted Updates

- Demolition of existing lodge
- New Environmental Learning Center
- Well water supply
- Septic system expanded
 - New Building
 - Existing Arts Building and staff building
- Amphitheater – Donor pending
 - 122 seats
- Patio – Donor Pending

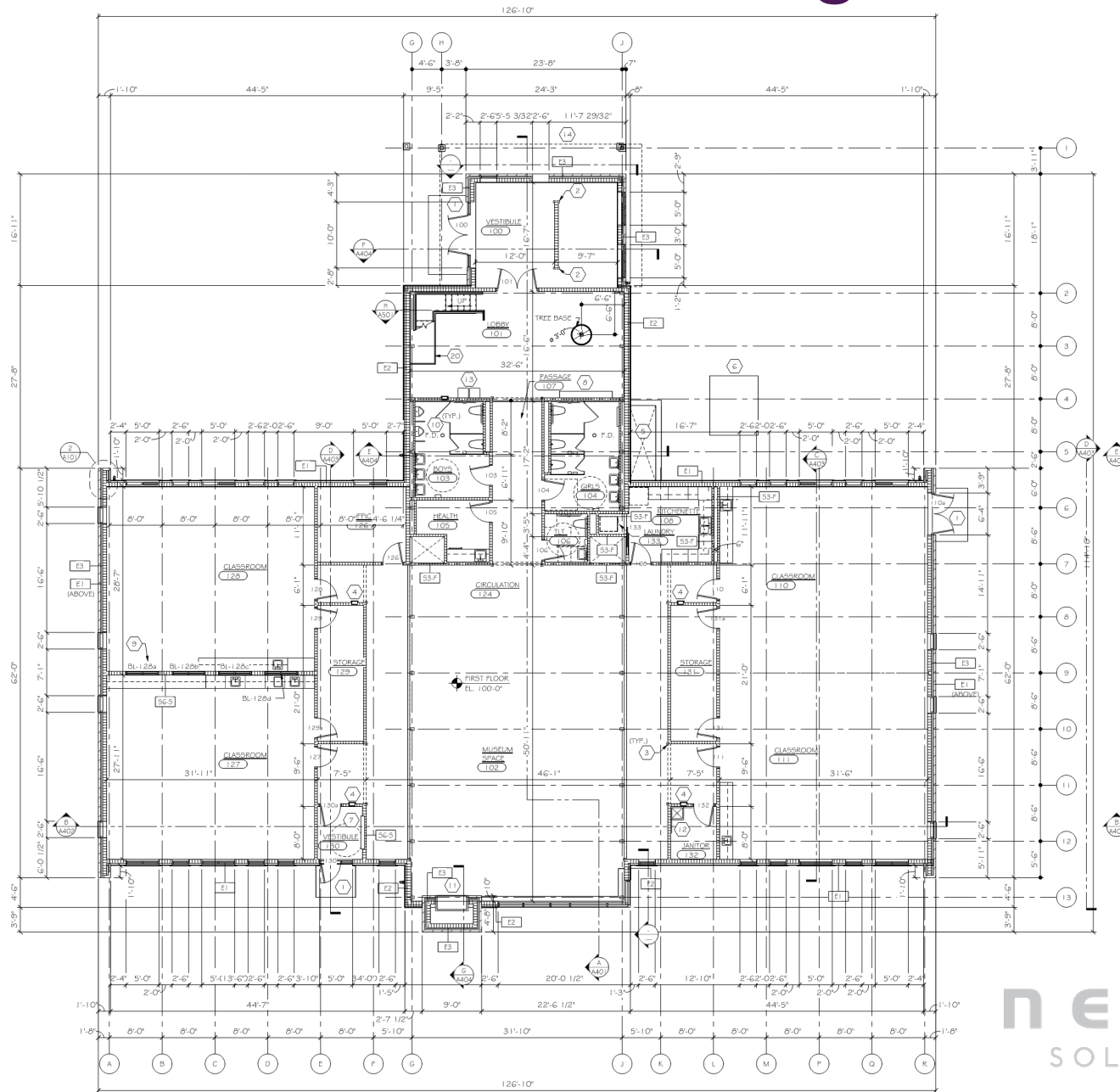


School Forest: Environmental Learning Center

95% Design

Areas of work - Main Floor:

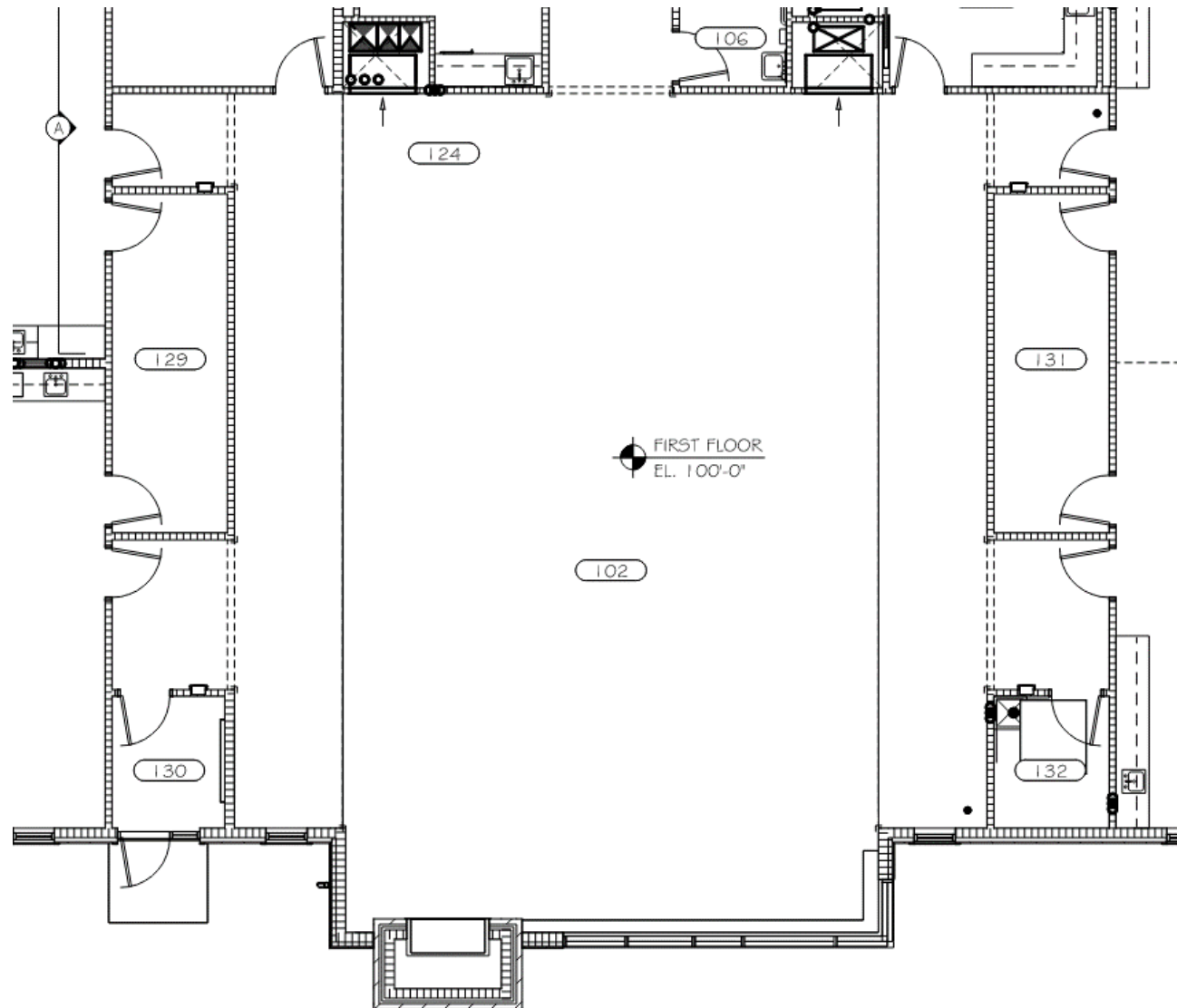
- Vestibule with mud room
- Lobby with display
- Donated tree (sculpture)
- Toilet Rooms
- Office
- Health Room
- Kitchenette
- 2 regular classrooms
- 1 large classroom/
demonstration space
- Museum Space
- Storage





School Forest: Environmental Learning Center

95% Design



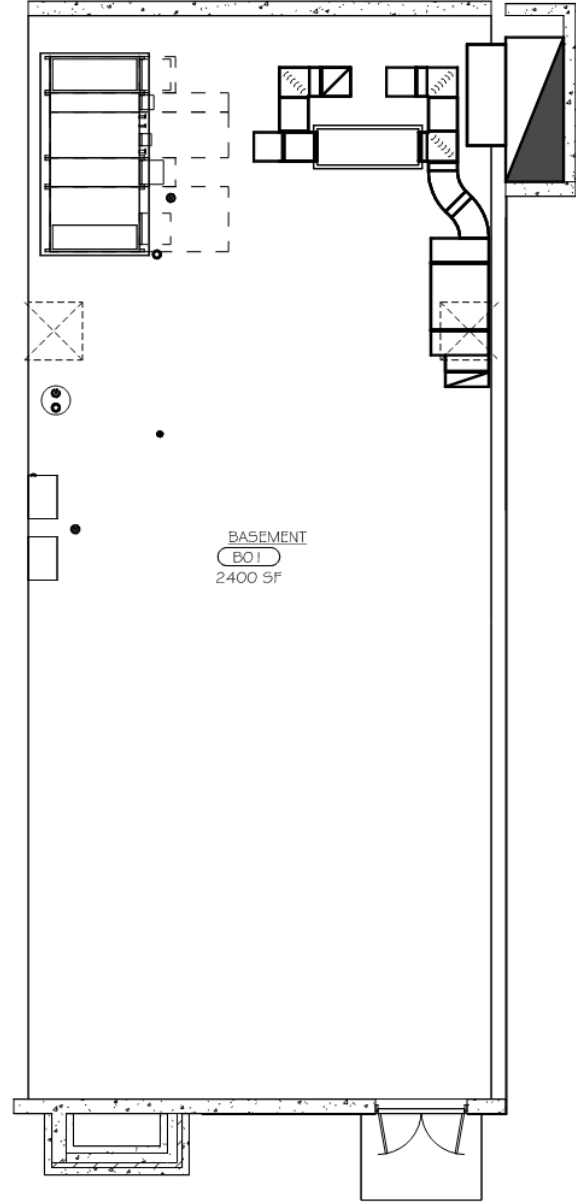
Museum Space

- Display Cases – Donor
- FirePlace
- River Views



School Forest: Environmental Learning Center

95% Design



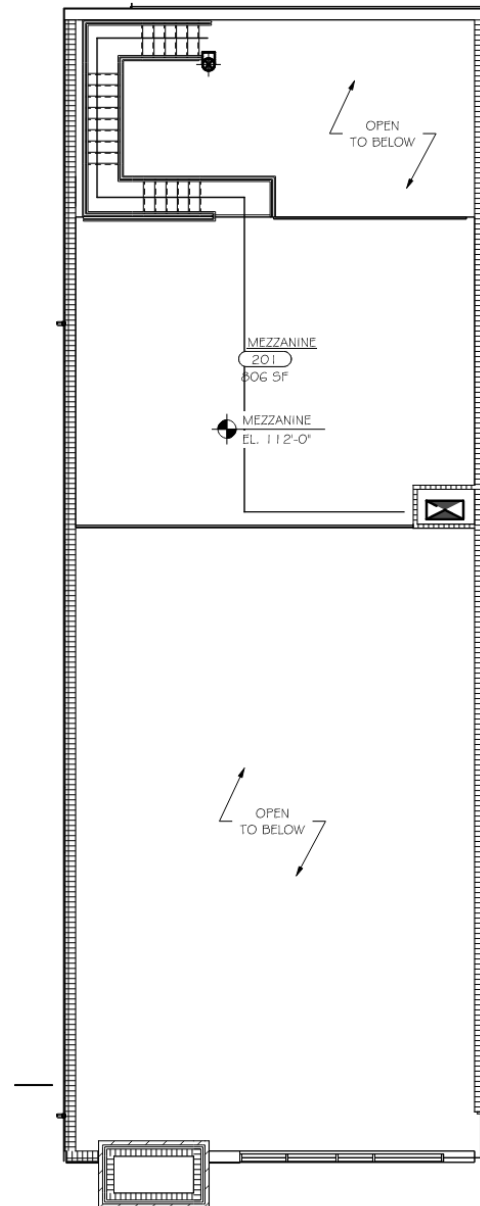
- Areas of work:
- Basement
- Mechanical Space
 - Electrical Space





School Forest: Environmental Learning Center

95% Design



Areas of work:

Mezzanine

- Open to below
- Occupiable Space

Key Plan



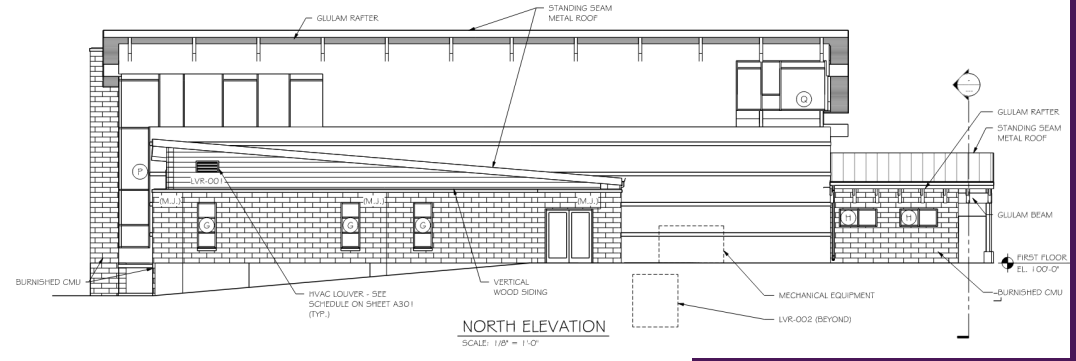
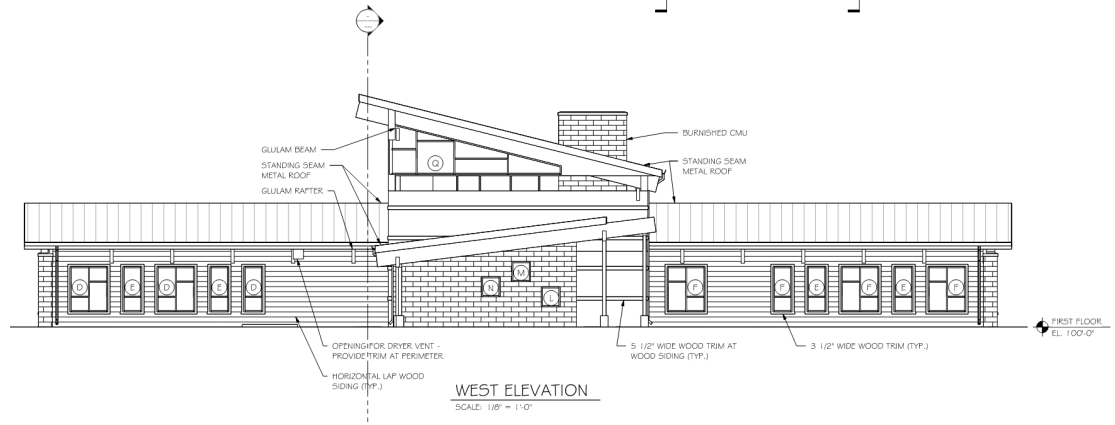
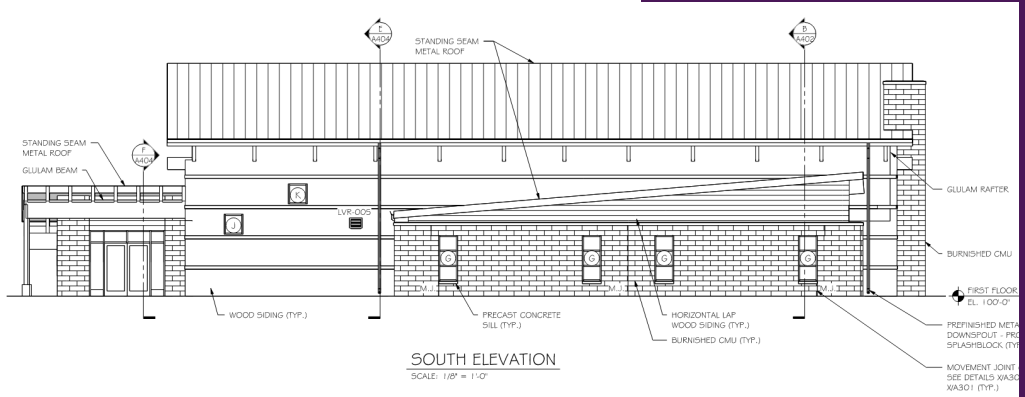
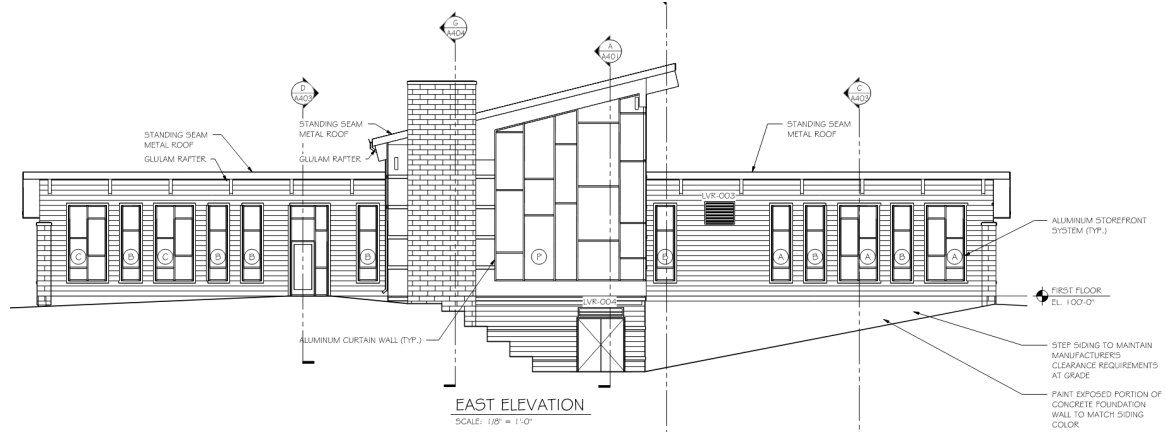
nexus
SOLUTIONS®



School Forest: Environmental Learning Center

95% Design

Building Elevations

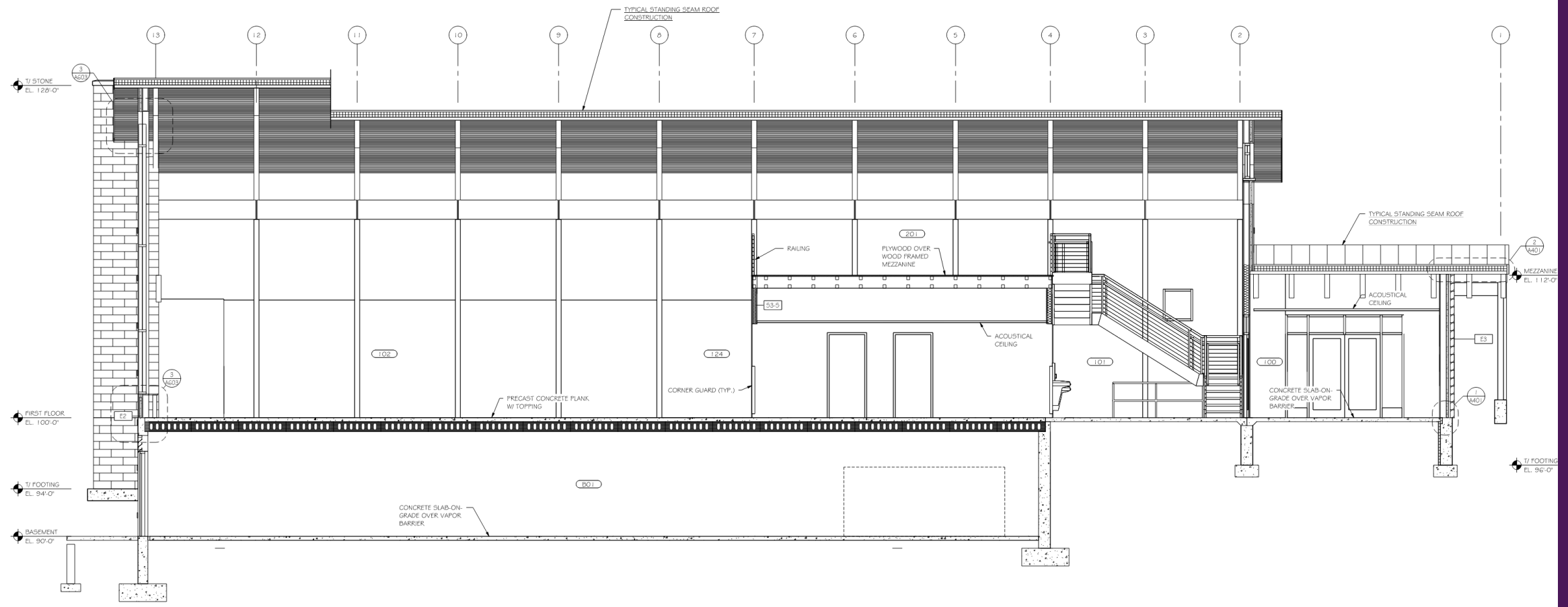




School Forest: Environmental Learning Center

95% Design

Building Section





School Forest: Environmental Learning Center

95% Design

- **Mechanical:**

- Air handling Unit with Energy Recovery
- Cooling will be handled by a Dx Condensing Unit located on grade.
- In-floor Radiant Heat keeping the spaces comfortable in the heating season.

- **Plumbing:**

- Domestic Solar Water Preheat System for domestic water as alternate.
- Well water
- Septic



➤ School Forest Environmental Learning Center/ Bannerman Hall: 95% Review Electrical

Electrical

- Environmental Learning Center.
 - Power distribution, lighting, telecom, fire alarm and security design for the new
- Replace generator with larger unit to provide back up power to entire site.
- Bannerman Hall
 - Replace existing fire alarm system
 - Upgrade power distribution