



➤ South Mountain Elementary: District Staff Involvement

District Involvement

(6) Design Meetings

- District Leadership Team
- Building Design Committee
- Principal Walk Through

(3) User Group Meetings

- Principal
- Maintenance
- Teachers 4,5th grade

South Mountain Elementary: Exterior Rendering



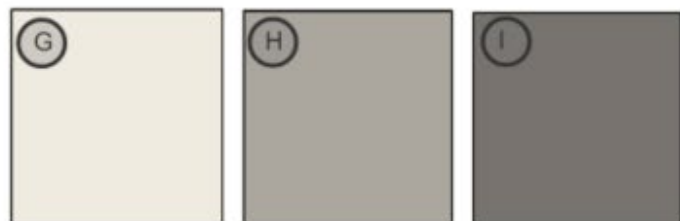


➤ South Mountain Elementary: Finish Board

South Mountain Elementary | Interior Finishes

PHOTO DESCRIPTION

- A. Porcelain floor tile for secure entry, main office, corridors and restrooms
- B. Walk off carpet tile for new vestibules
- C. Carpet for all classrooms
- D. Window sills
- E. Laminate - countertops
- F. Laminate - vertical casework
- G. Main paint color (SW 8917 Shell White)
- H. Accent paint color in main office
- I. New hollow metal door frame color.
- J, K, & L. Ceramic subway tiles for restrooms- pattern to coordinate with existing tile pattern.



Notes

- Finishes and material similar to existing

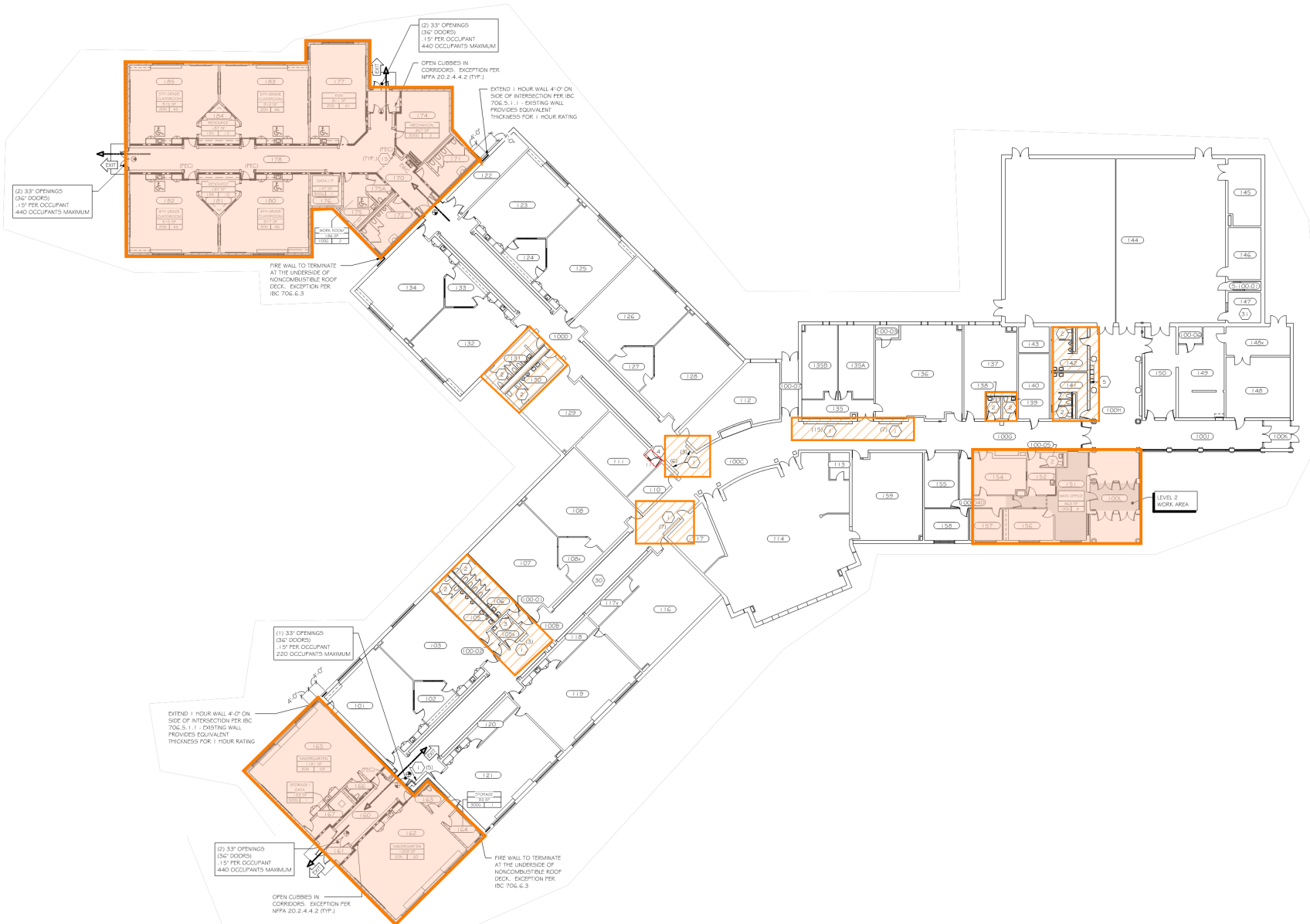


Noted Updates

- New addition locations
- Fire lane
- Walking path



➤ South Mountain Elementary: 95% Design

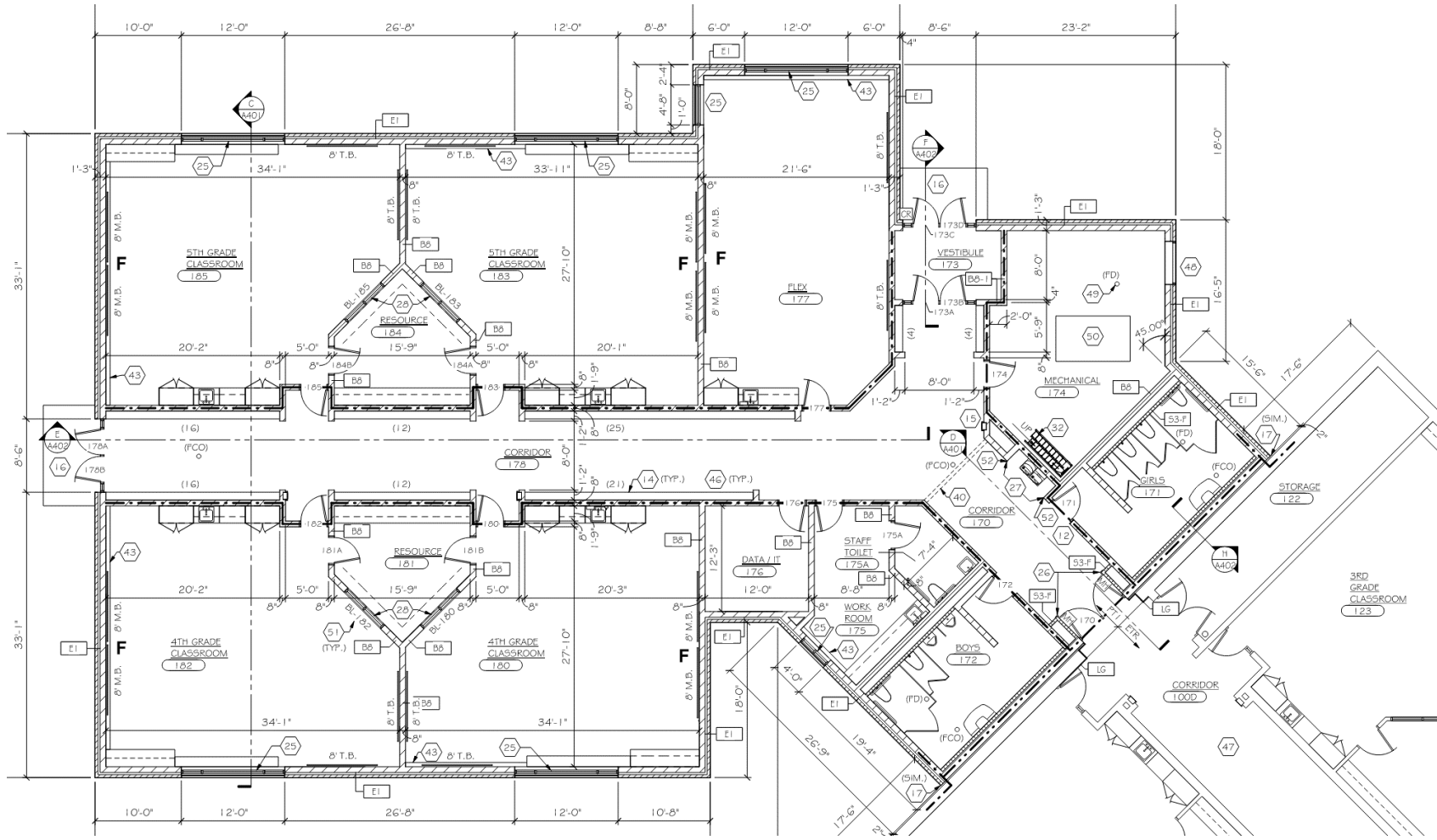


Areas of work shown:

- 4 Classroom Addition
- 2 Classroom Addition
- Front entrance upgrades
- ADA Upgrades
 - Door Hardware
 - Cubbies
 - Grab Bars



South Mountain Elementary: 95% Design



Areas of work:

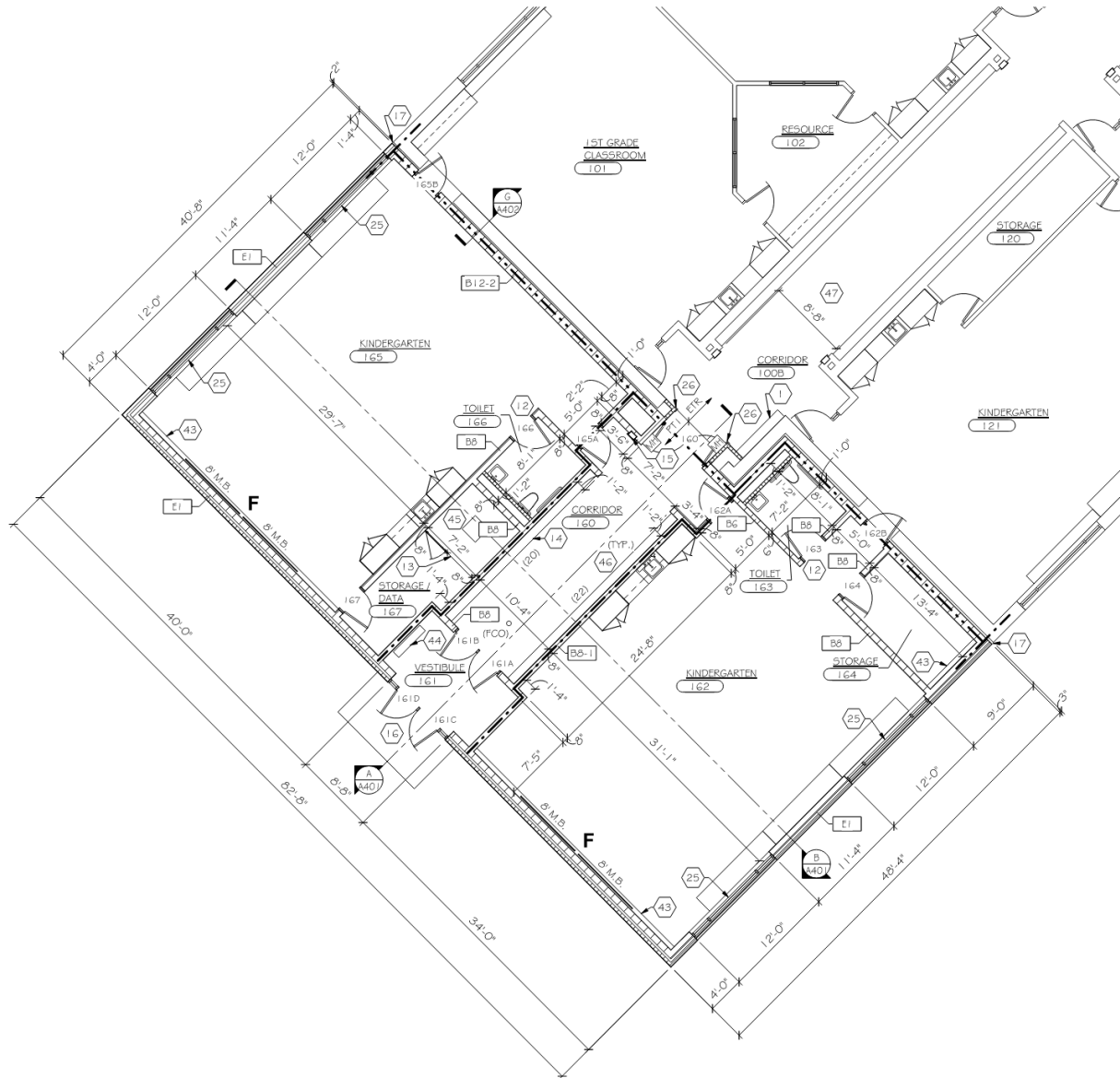
- 4 Classroom Addition
 - Flex room
 - (2) Resource Rooms
 - Boy and Girl Toilet rooms
 - Workroom
 - IT Room
 - Mechanical Space

Key Plan





➤ South Mountain Elementary: 95% Design



Areas of work:

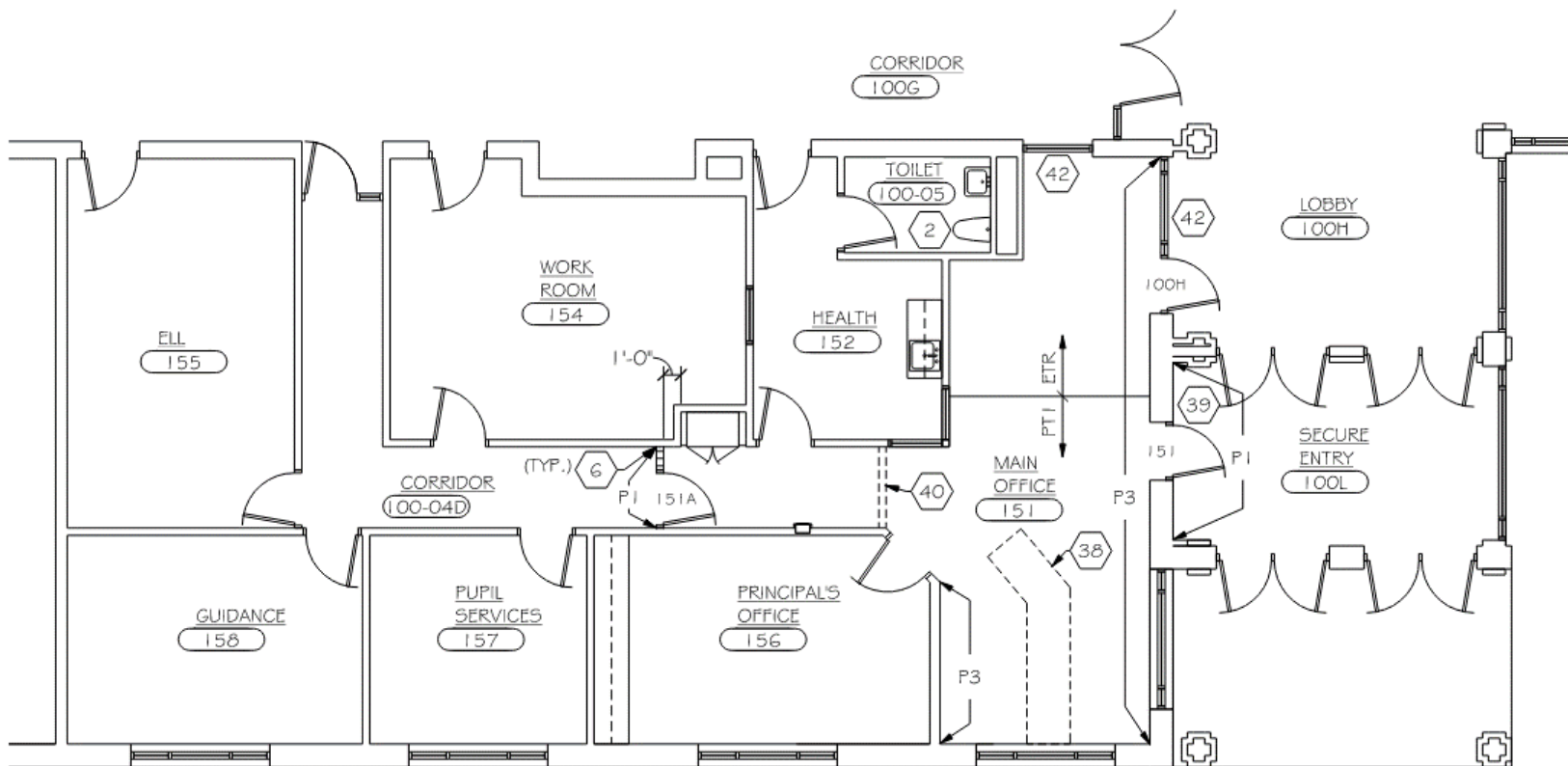
- 2 Classroom Addition
 - Kindergarten
 - Toilets
 - IT/ Storage

Key Plan





➤ South Mountain Elementary: 95% Design



Areas of work:

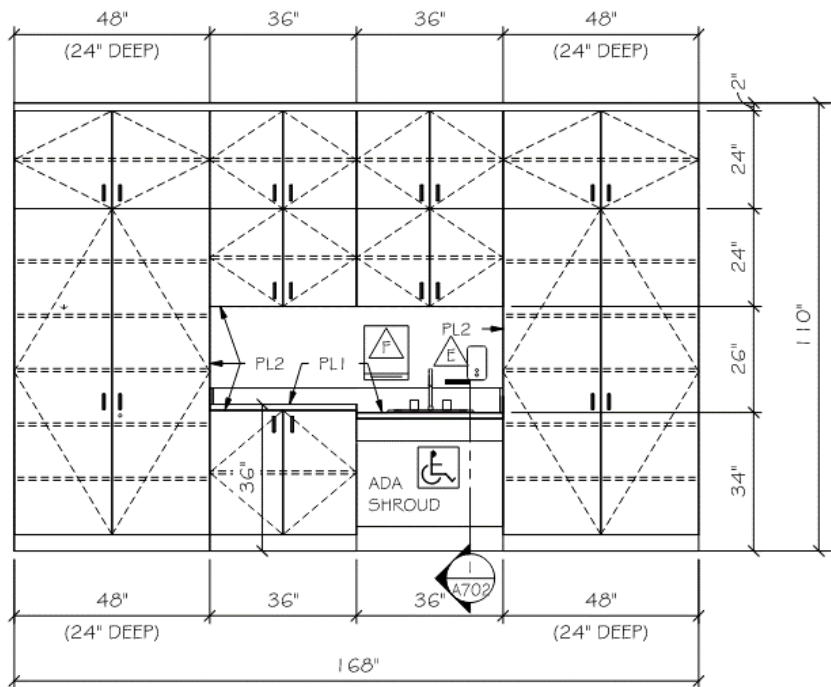
- Secure Front Entrance
- Team Feedback

Key Plan





➤ South Mountain Elementary: 95% Design

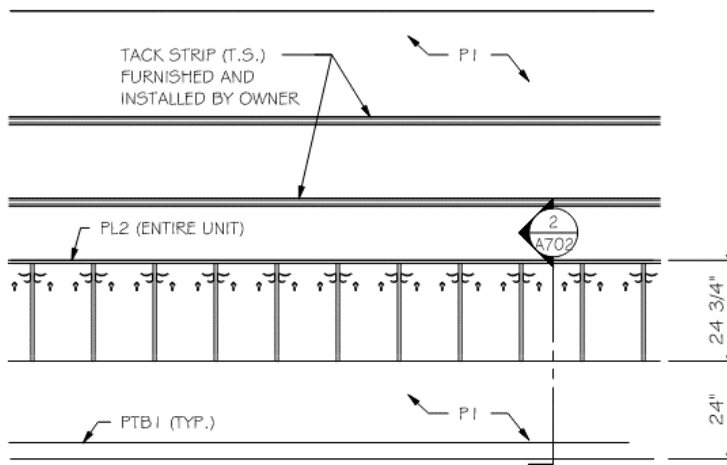


NORTH ELEVATION

TYPICAL CLASSROOM

SCALE: 3/8" = 1'-0"

ROOM: 180, 185 AS SHOWN
ROOM: 182, 183 OPP. HAND



TYPICAL AREA C CUBBIES

SCALE: 3/8" = 1'-0"

Areas of work:

- Casework
- Cubbies



➤ South Mountain Elementary: 95% Review

- **Mechanical:**

- New Air Handling Unit to serve 4 classroom addition with variable air volume (VAV) distribution.
- Extend existing VAV system to 2 classroom addition.
- Replace chiller and chilled water pumps to serve entire building with cooling.

- **Plumbing:**

- Tie into existing domestic supply and sanitary sewer to serve classroom sinks.
- New storm sewer to outside of building for roof drainage.



➤ South Mountain Elementary: 95% Review

Electrical

- LED Lighting for new classroom additions
- Power distribution, telecom, and security for both new classroom additions and entry
- Replace existing fire alarm system including control panel and all devices, bringing the system up to current codes.
 - Tie into Maintenance and Operations Building
- Relocate existing generator to correct code violation based on location