



➤ Riverview Elementary: District Staff Involvement

District Involvement

(6) Design Meetings

- District Leadership Team
- Building Design Committee
- Principal Walk Through

(3) User Group Meetings

- Principal
- Maintenance
- Teachers 4,5th grade

Riverview Elementary: Exterior Rendering





Riverview Elementary: Finish Board

Riverview Elementary | Interior Finishes

PHOTO DESCRIPTION

- A. Porcelain floor tiles for secure entry, main office, and corridors
- B. Walk off carpet tile for new vestibule
- C. Carpet for principals office, classrooms, and resource rooms
- D. Window sills
- E. Laminate - countertops and tops for cubbies
- F. Laminate - vertical casework
- G. Main paint color (SW 8917 Shell White)
- H. Accent paint color - to match existing red in corridors
- I. Accent paint color - to match existing gray in main office



Notes

- Finishes and material similar to existing



Noted Updates

- New addition location
- Tennis courts
- Generator location

Riverview Elementary: 95% Design



Riverview Elementary: 95% Design



Areas of work shown:

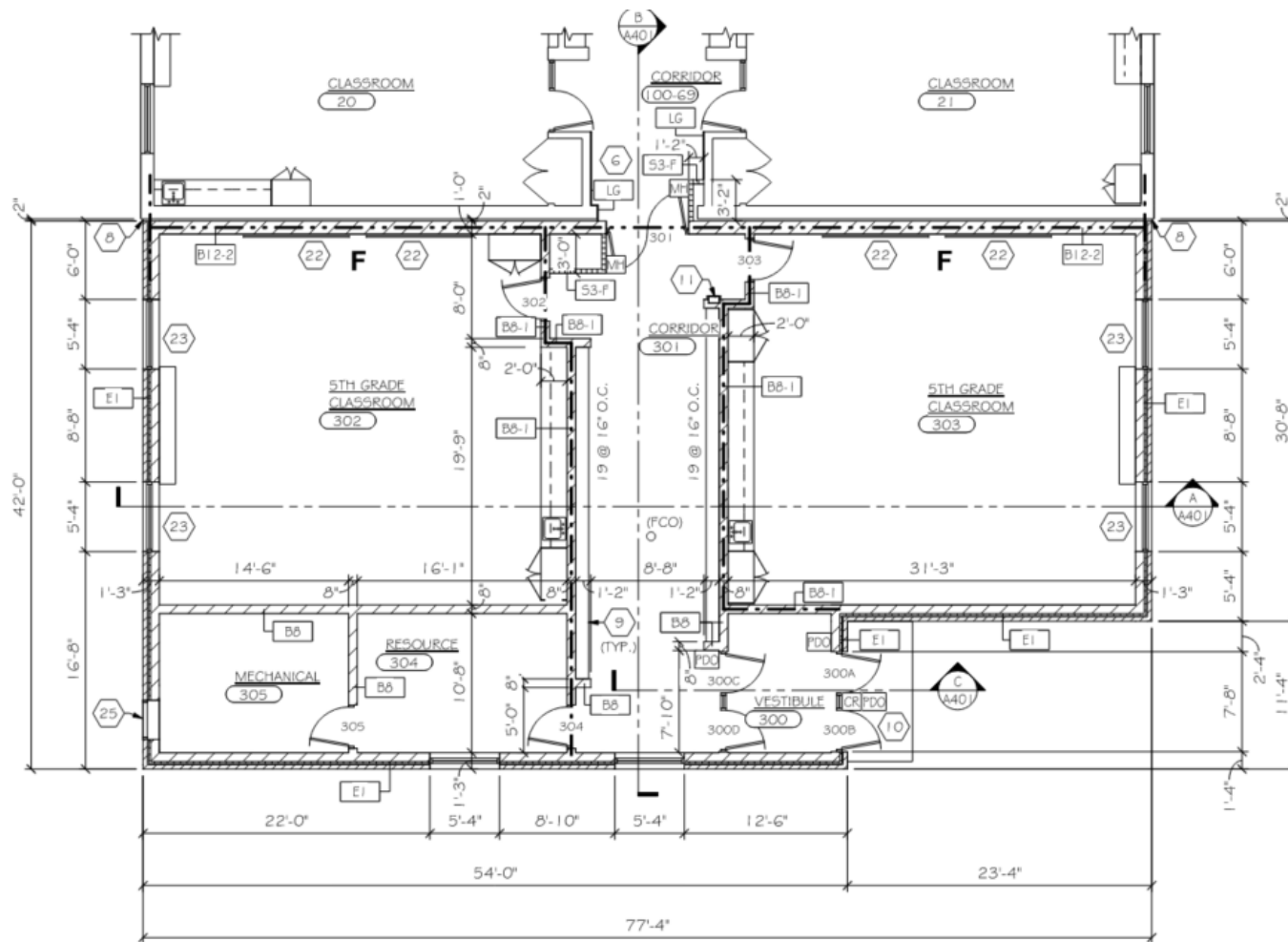
- 2 classrooms
- 1 resource rooms
- Front entrance upgrades
- ADA Upgrades
 - Door Hardware
 - Stage/ handrails



Riverview Elementary: 95% Design

Areas of work:

- 2 classrooms
- 1 resource rooms



PARTIAL FIRST FLOOR PLAN - AREA B

SCALE: 1/8" = 1'-0"

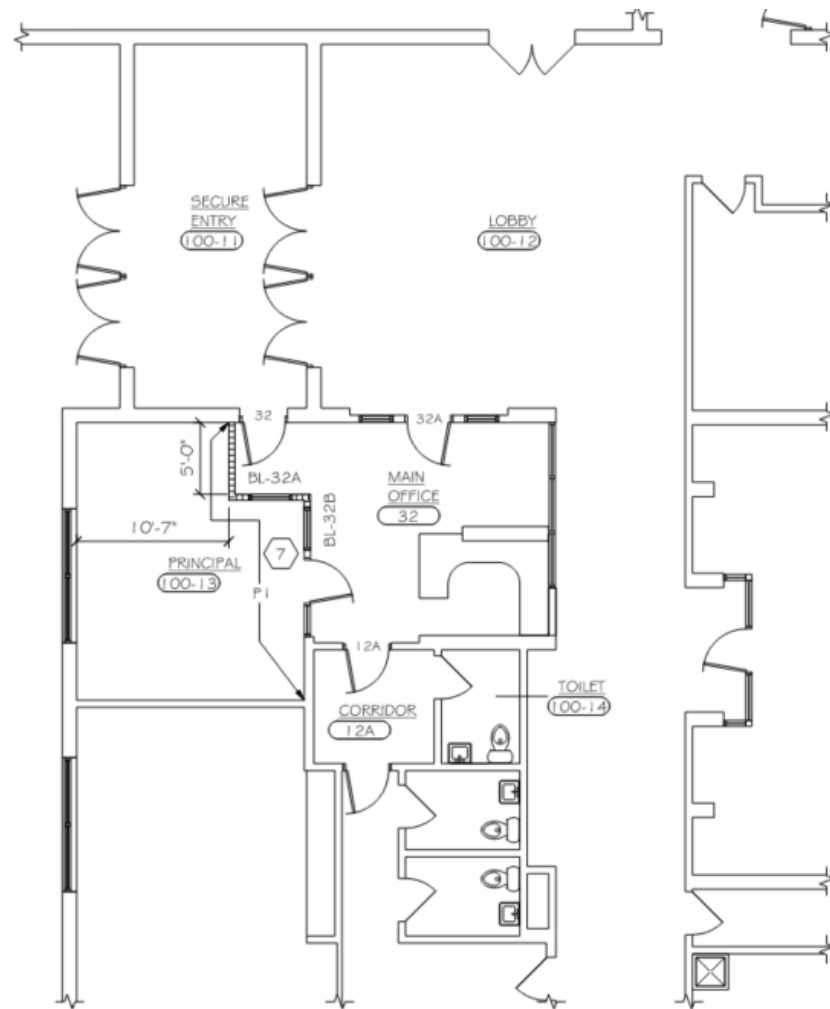


Key Plan





Riverview Elementary: 95% Design



PARTIAL FIRST FLOOR PLAN - AREA A

SCALE: 1/8" = 1'-0"



Areas of work:

- Secure Front Entrance

Key Plan

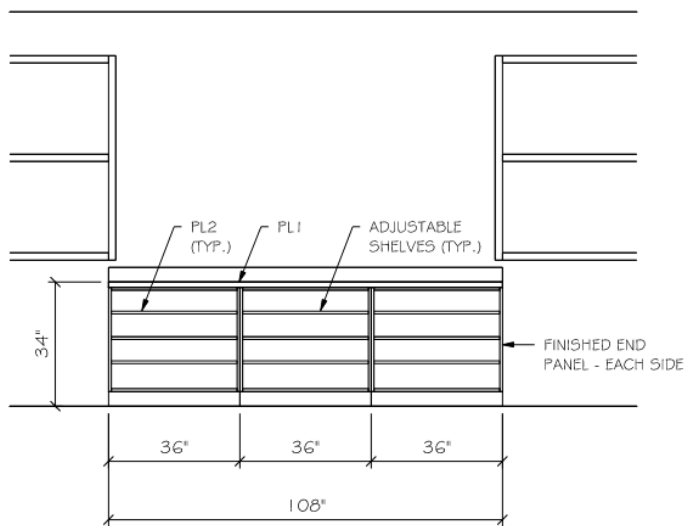




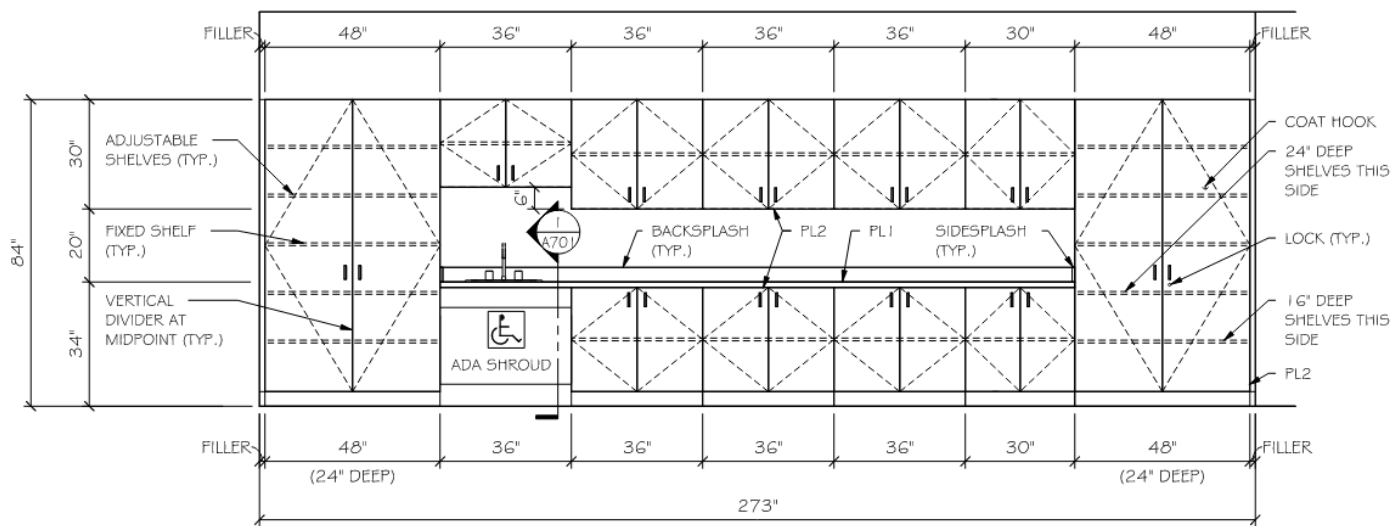
Riverview Elementary: 95% Design

Areas of work:

- Casework
- Cubbies



EAST ELEVATION



WEST ELEVATION

CLASSROOM

SCALE: 3/8" = 1'-0"

ROOM: 303



➤ Riverview Elementary: 95% Review Mechanical

- **Mechanical:**

- New Air Handling Unit to serve 2 classroom addition with variable air volume distribution.

- **Plumbing:**

- Tie into existing domestic supply and sanitary sewer to serve classroom sinks.
- New storm sewer to outside of building for roof drainage.



➤ Riverview Elementary: 95% Review Electrical

Electrical

- LED Lighting for new classroom addition and entry
- Power distribution, telecom, and security for new classroom addition and entry
- Tie fire alarm system to Maintenance and Operations Building
- New generator for backup power