



Thomas Jefferson
Elementary
School



Thomas Jefferson Referendum Concept

Thomas Jefferson Elementary School Wausau, Wisconsin

- 1 Secure Entry and Main Office
- 2 Pupil Services Office
- 3 Parking Lot
- 4 Security Gate

- DEFERRED MAINTENANCE
- REMODELING



FIRST FLOOR PLAN
0' 10' 20' 30' 40' 50' 60'



Thomas Jefferson Site Plan



Noted Updates

- 4k Parking Lot
- Concrete sidewalk
- Asphalt Repairs
- Fence work



Thomas Jefferson: Finishes

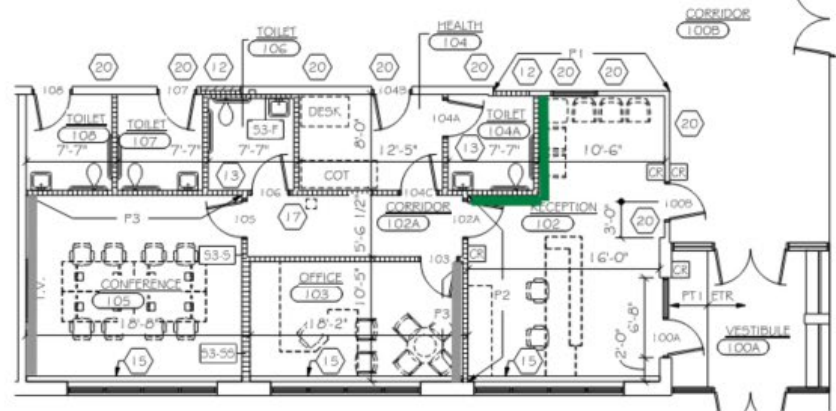
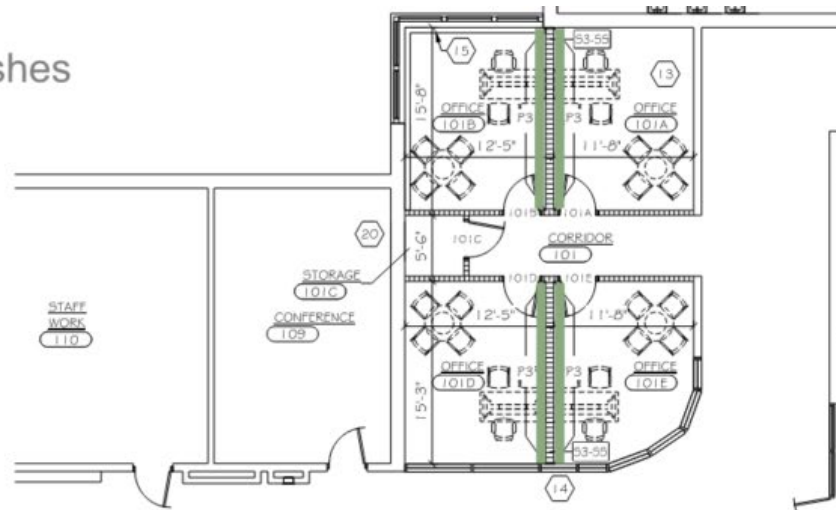
Thomas Jefferson Elementary School | Interior Finishes



CARPET



PAINT



BATHROOM FLOOR TILE

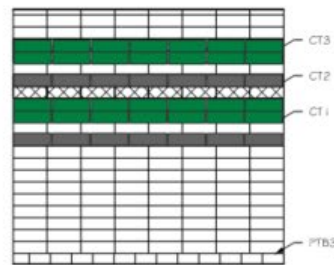


BATHROOM WALL TILE



RECEPTION FLOOR TILE

NOTE:
CENTER PATTERN ON WALL (TYP.)



WALL TILE PATTERN NO. 1

SCALE: 3/8" = 1'-0"

Areas of Work

- Secure Front Entry/
Front office remodel
- Student Services
Remodel



➤ Thomas Jefferson - Mechanical Systems Summary

Mechanical

- Modify existing ventilation systems and provide new VAV boxes to serve remodeled office area.
- Provide new radiant heat in perimeter remodeled offices.
- Provide new exhaust fan to serve four new toilet rooms.

Plumbing

- Modify existing drainage piping for four new toilet rooms.
- Provide new domestic water supply piping from boiler room for four new toilet rooms.
- Replace one drinking fountain with new ADA compliant drinking fountain with bottle filler.



➤ Thomas Jefferson - Electrical Systems Summary

Electrical

- Power distribution, lighting, telecom, fire alarm and security modifications for remodeled areas and secure entry
- Update power for bottle filler
- Update lighting in remodeled office to be LED, with associated controls.
- New light poles to go in new parking lot
- Add video surveillance updates

- No work to replace clock/ PA systems