



WAUSAU SCHOOL DISTRICT
Referendum Project Update
95% Design Progress
**Horace Mann
Middle School**

October 9, 2023

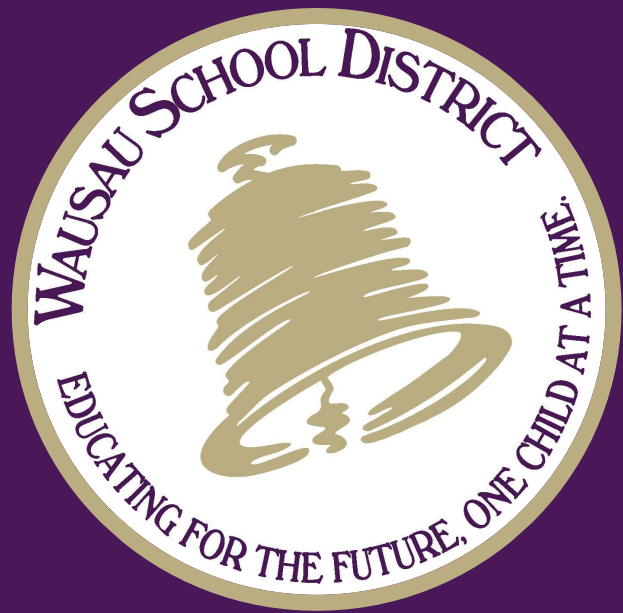


NEXUS
SOLUTIONS®



Agenda

- 1 95% Design Review – Horace Mann
- 2 95% Budget Review – Horace Mann
- 3 Questions



1

Horace Mann
Middle School



➤ Horace Mann Agenda/ Purpose of Presentation

Our Purpose Today:

- Present current design and how it change from the initial referendum concepts.
- Approve design direction and budget to continue to move project forward
- Approve changes indicated by restructuring


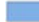
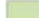


Horace Mann Referendum Concept

Horace Mann Middle School

Wausau, Wisconsin

- 1 Secure Main Offices & Pupil Services
- 2 Community Room / Large Group Instruction Remodeling
- 3 Library-IMC Remodeling (Second Floor)
- 4 Locker Room Remodeling
- 5 Physical Education Fitness
- 6 Special Education Remodeling (Second Floor)
- 7 Montessori Secure Entry & Classroom
- 8 Montessori Remodeling
- 9 New Playground Equipment & Fall Protection Surface

-  DEFERRED MAINTENANCE
-  REMODELING
-  NEW ADDITION



Notes

- Secure Main Entry/ Pupil Services
- Community Room/ Large Group Instruction
- Library/ IMC Remodel
- Fitness Addition
- Montessori Secure Entry and Classroom
- Montessori Remodeling
- New Playground equipment with fall protection service



➤ Horace Mann District Staff Involvement

District Involvement

(11) Design Meetings

- District Leadership Team
- Building Design Committee

(3) User Group Meetings

- Principal
- Maintenance
- Teachers
- Library, Athletics/ PE, Front office/ Art

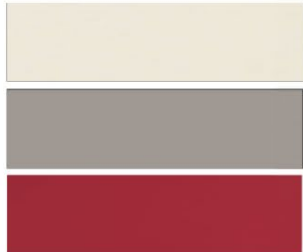


Horace Mann Finish Board

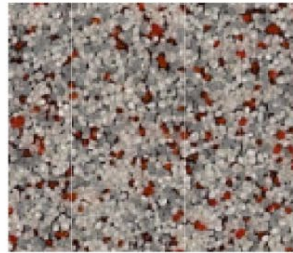
Interior Finishes



PORCELAIN FLOOR TILE



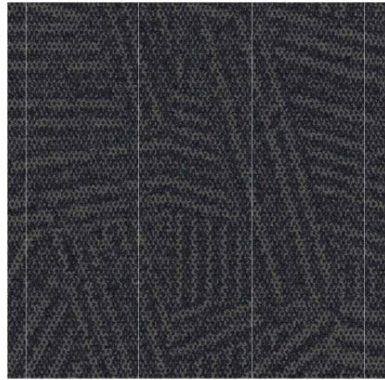
CERAMIC WALL TILES



RESINOUS FLOOR



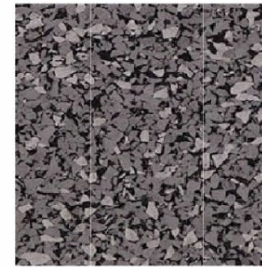
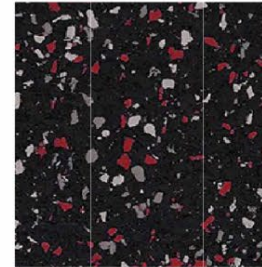
CARPET



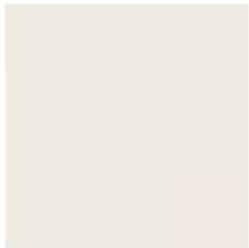
CARPET



CEILING BAFFLES/
BLADES



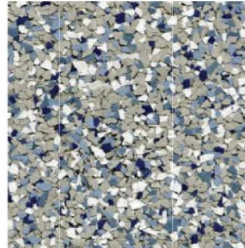
ATHLETIC RUBBER FLOOR



FIELD COLOR



ACCENT PAINT COLORS



RESINOUS FLOOR



VINYL BASE



RUBBER



CASEWORK

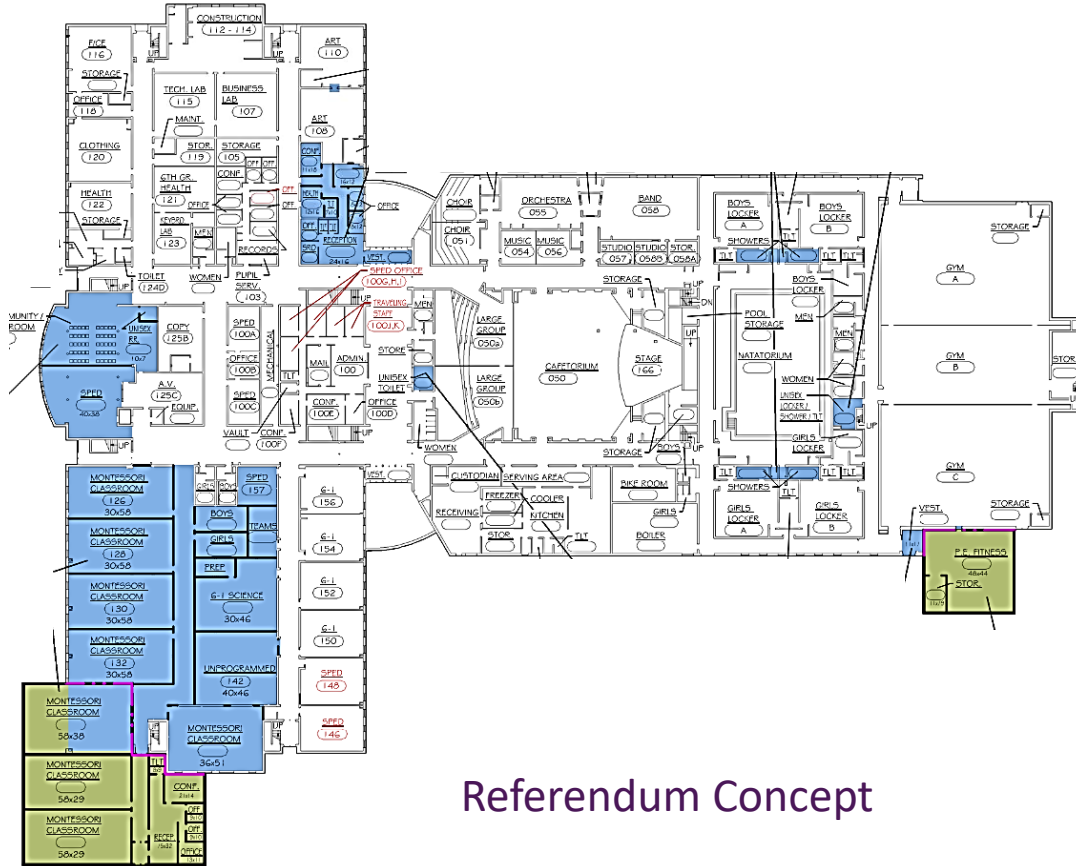
Horace Mann Middle School | Interior Finishes

Notes

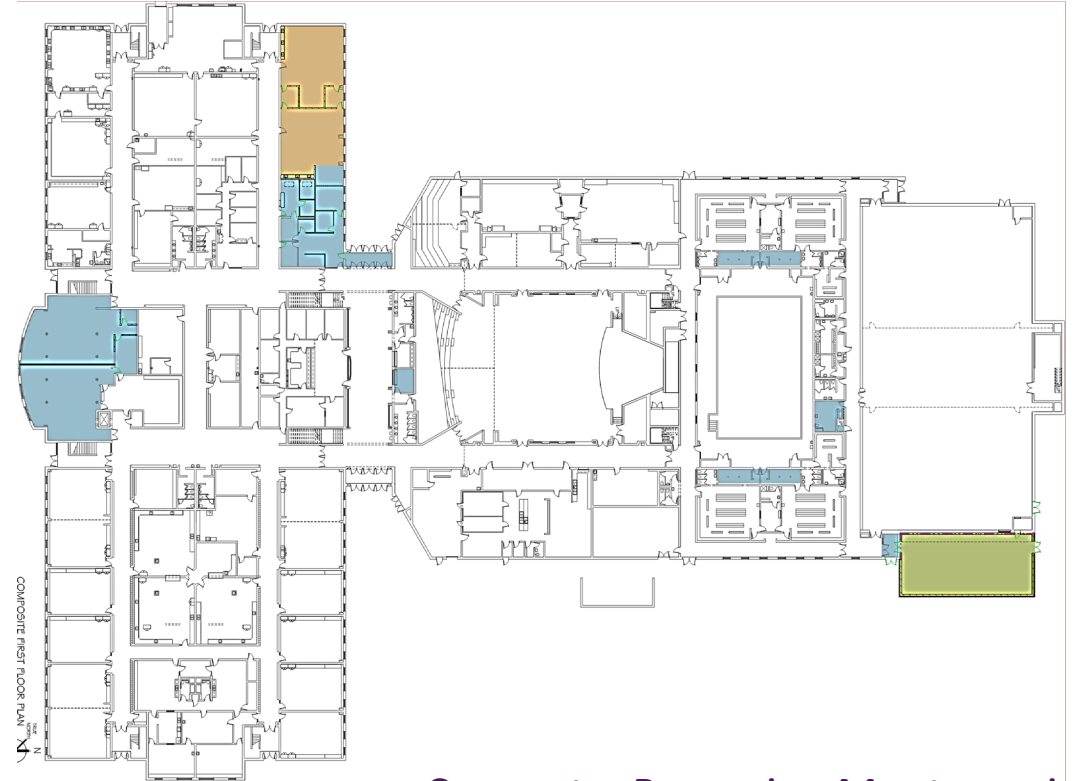
- Finishes and materials
- Similar to existing areas
- Tie into existing building colors



➤ Horace Mann Referendum Comparison – First Floor



Referendum Concept



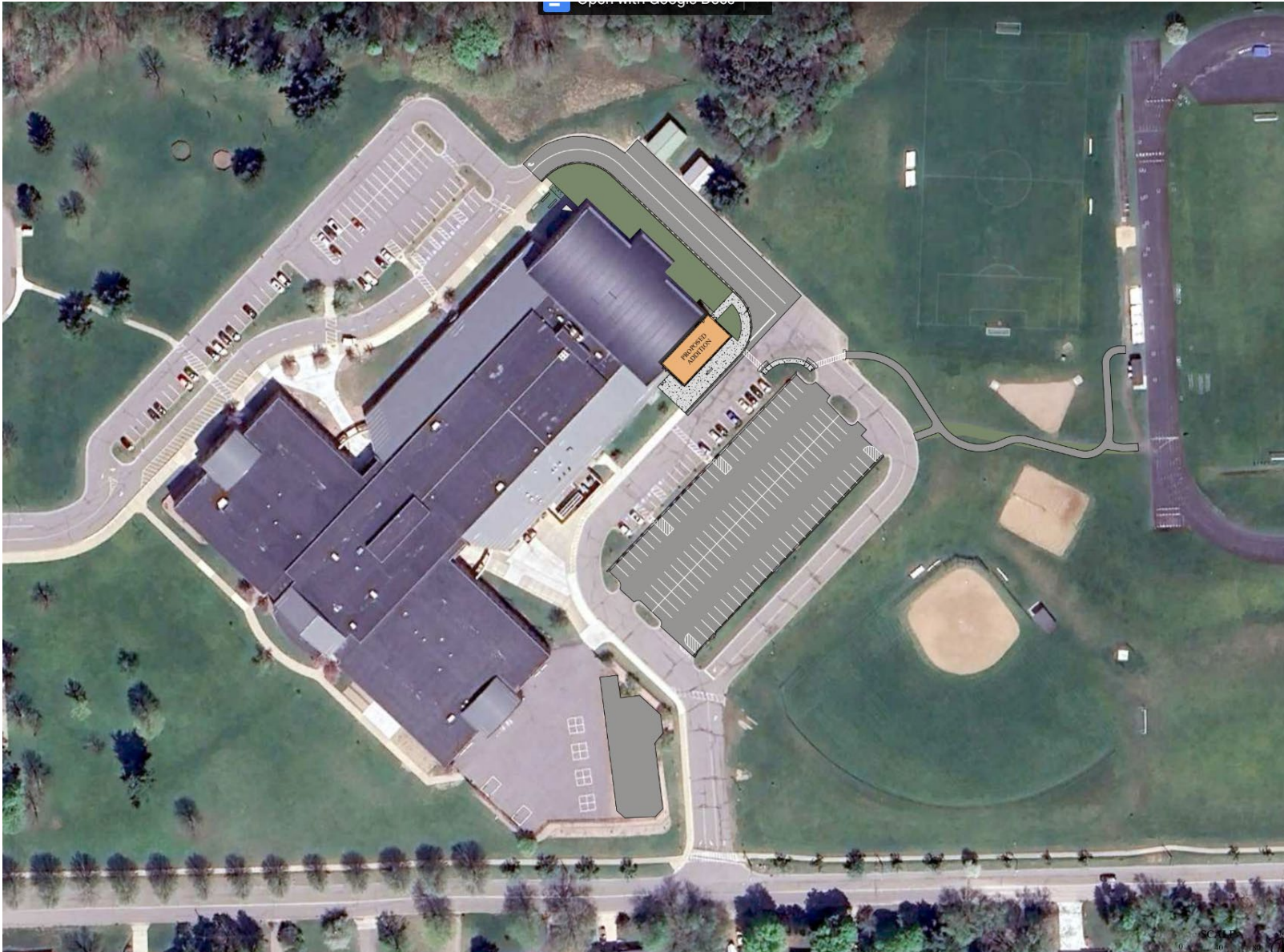
Concept – Removing Montessori

Restructuring Changes

- Montessori addition/remodeling was removed
- Art Rooms Added



➤ Horace Mann 95% Design



Noted Updates

- Playground update
- ADA ramp to field
- Miscellaneous updates
 - Utility work
 - Asphalt work
 - Southeast Parking Lot
 - Relocated bike racks



➤ Horace Mann 95% Design

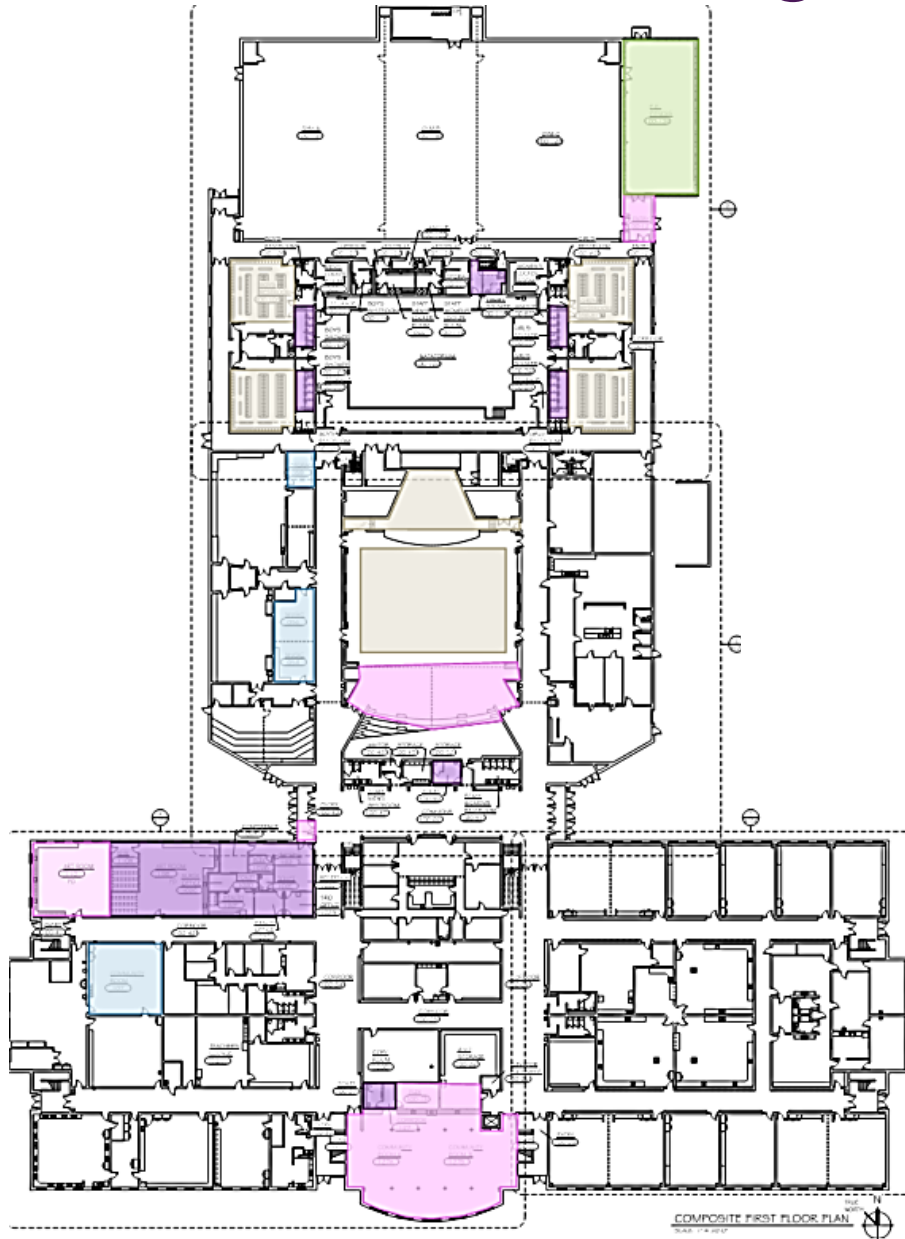


Design
Rendering

- Fitness addition



➤ Horace Mann 95% Design



First Floor

Areas of Work

- Front office/ Secure Sequence
- Art rooms/ renovations
- Community room
- Locker rooms
- New fitness addition
- Miscellaneous work
 - Cafetorium
 - Door maintenance
 - Window caulking
 - ADA grab bars
 - Ceilings

Light Renovation

Medium Renovation

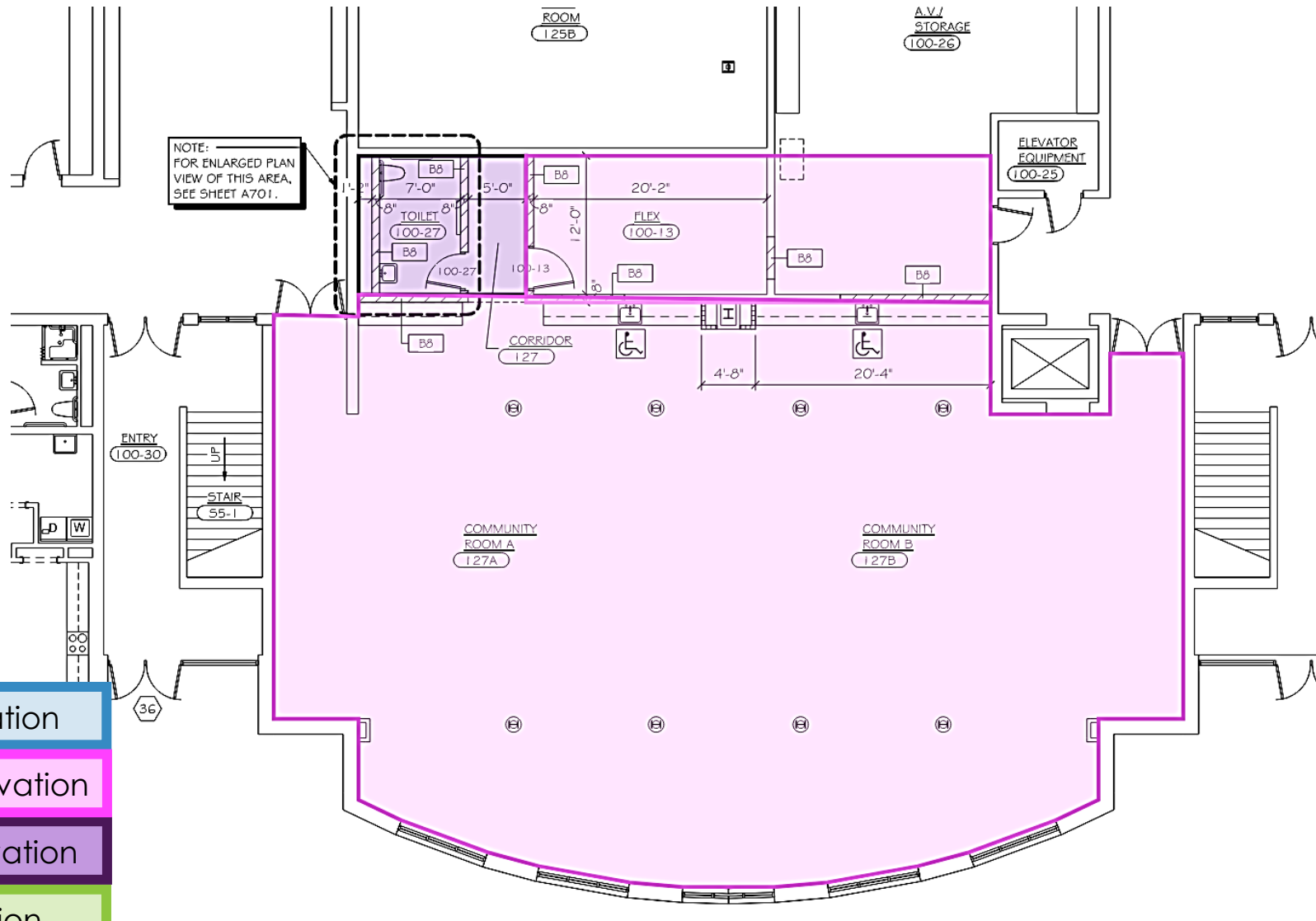
Heavy Renovation

New Addition

Updates/ Finishes



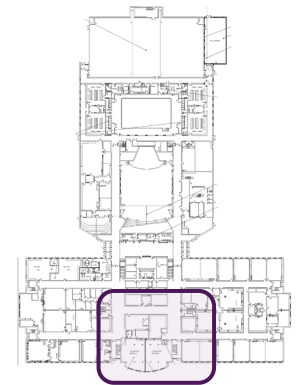
➤ Horace Mann 95% Design



Areas of Work

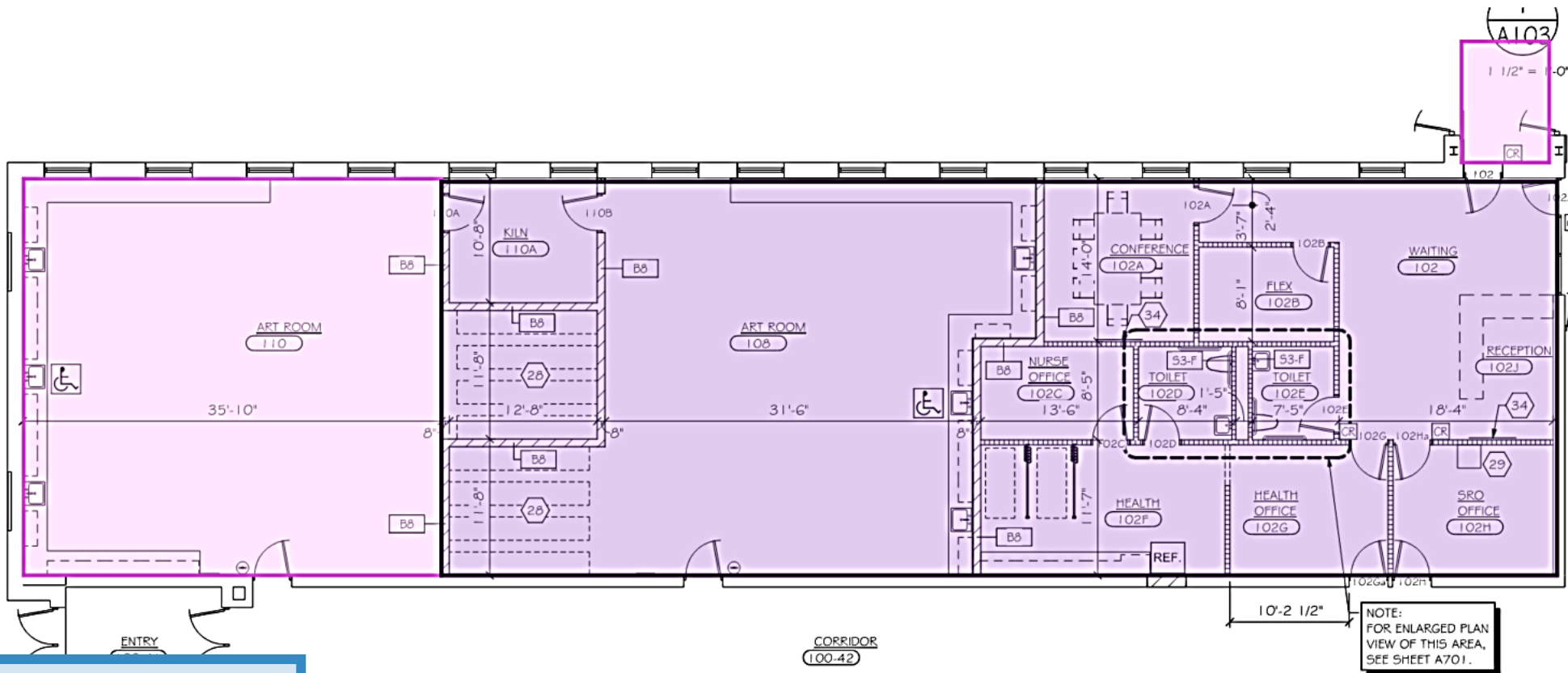
- Renovate library:
 - (2) Community rooms
 - Future Partition
 - New unisex toilet Room

Key Plan





Horace Mann 95% Design



Areas of Work

- Secure Front Entrance
- Health Rooms
- SRO
- Flex room
- Conference room
- (2) similar art rooms
- Art storage

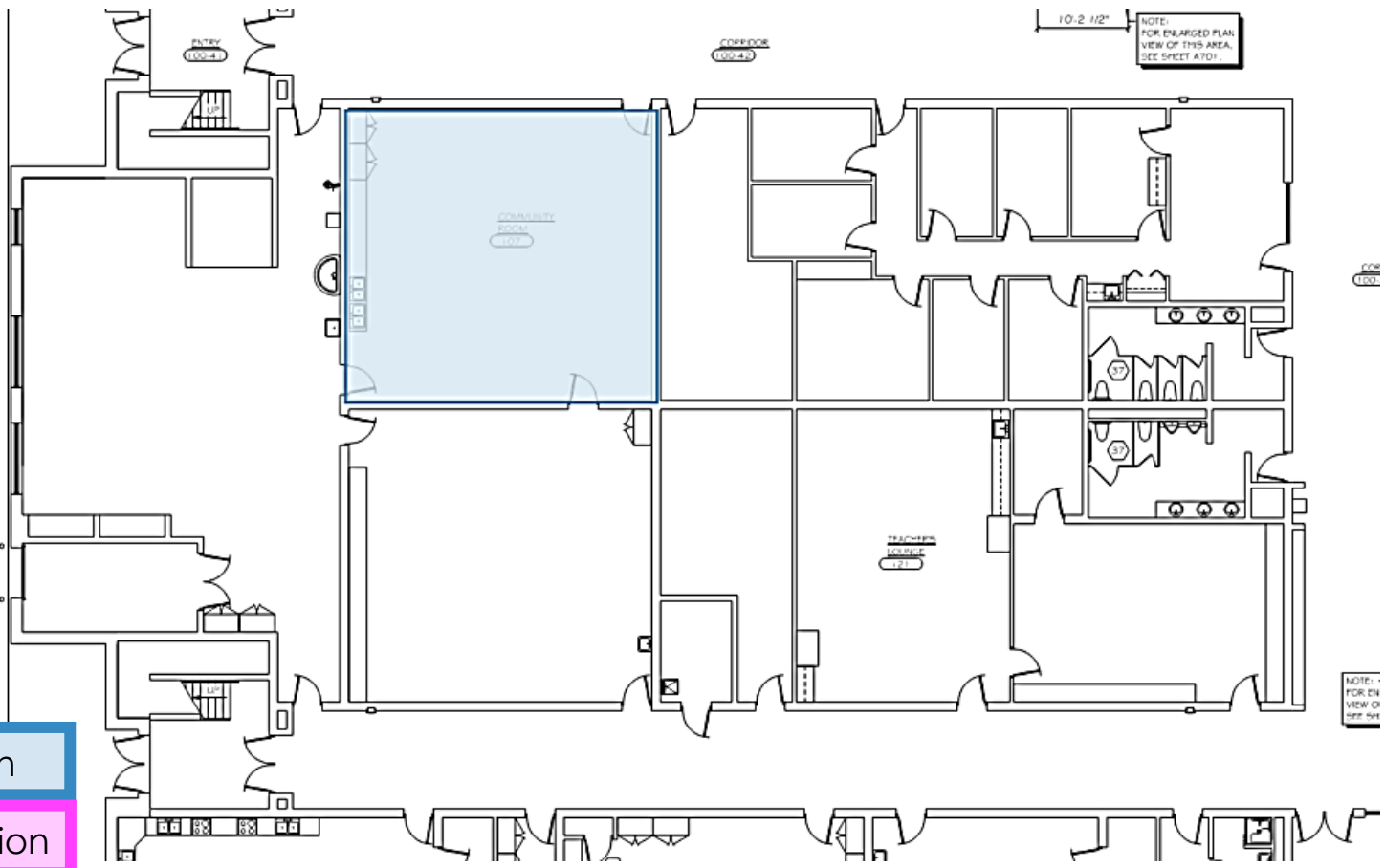


Key Plan

- Light Renovation
- Medium Renovation
- Heavy Renovation
- New Addition
- Updates/ Finishes



Horace Mann 95% Design



- Light Renovation
- Medium Renovation
- Heavy Renovation
- New Addition
- Updates/ Finishes

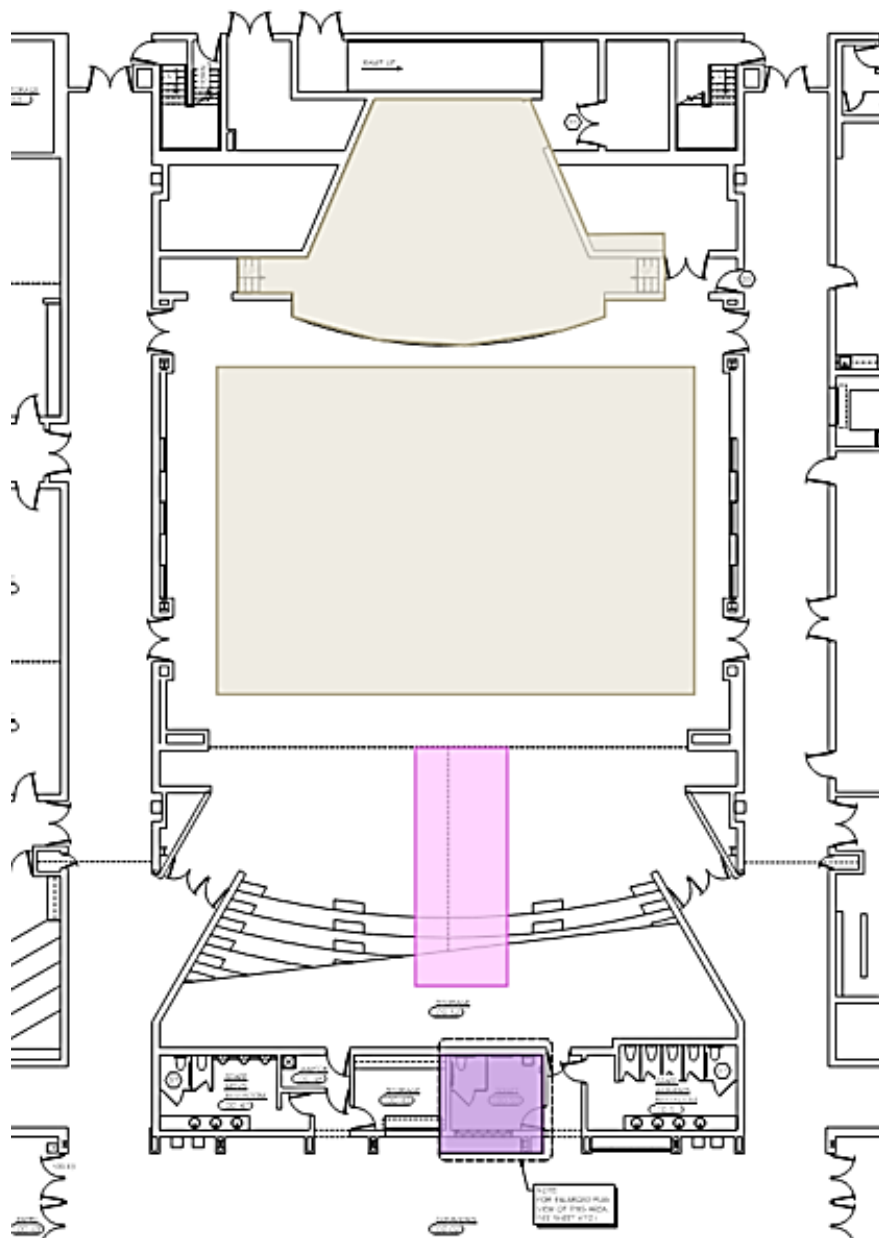
Areas of Work

- Tech Ed
- Dust collector
- Removed from scope





➤ Horace Mann 95% Design



Light Renovation

Medium Renovation

Heavy Renovation

New Addition

Updates/ Finishes

Areas of Work

- Cafetorium:
 - Unisex toilet
 - Mobile partitions
 - Lunch tables
 - LED stage lighting
- Work Completed
 - Sound Assist System

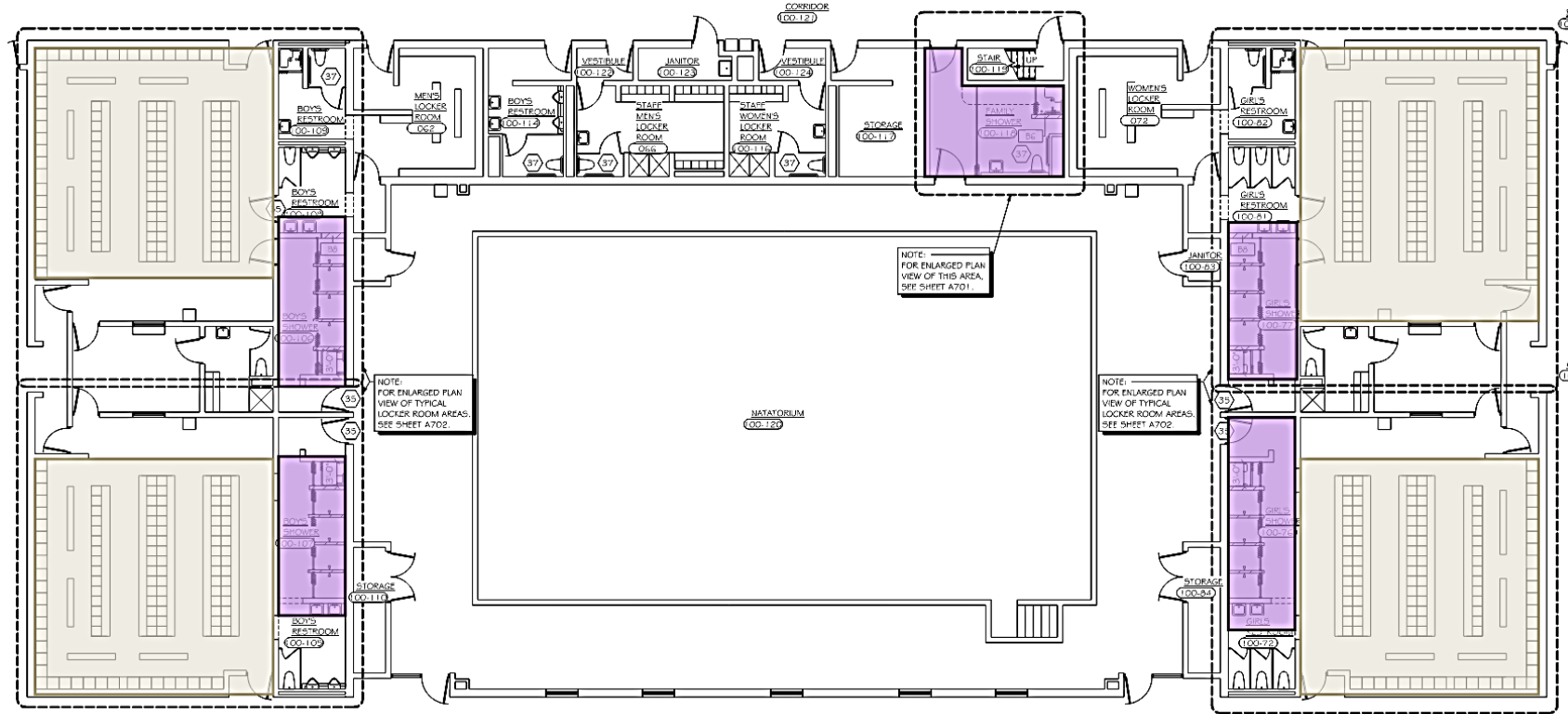
Key Plan



NEXUS
SOLUTIONS®



Horace Mann 95% Design



Areas of Work

- Locker Rooms:
 - Locker replacement
 - Private showers
 - Unisex locker and toilet rooms

Light Renovation

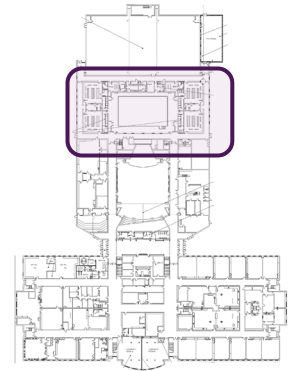
Medium Renovation

Heavy Renovation

New Addition

Updates/ Finishes

Key Plan

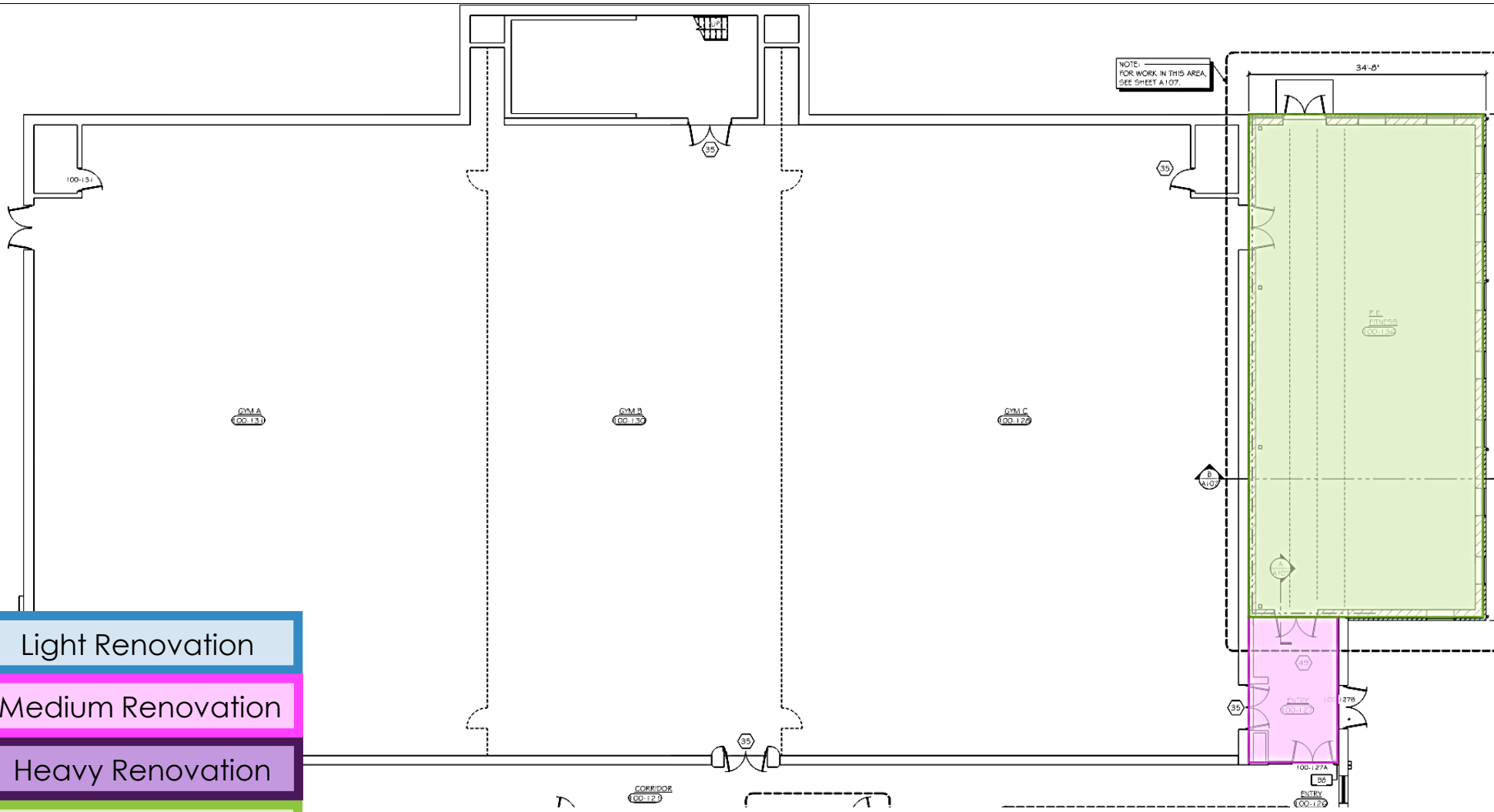


NEXUS
SOLUTIONS®

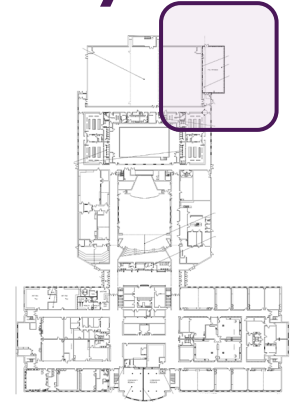


➤ Horace Mann 95% Design

- ## Areas of Work
- New fitness room addition

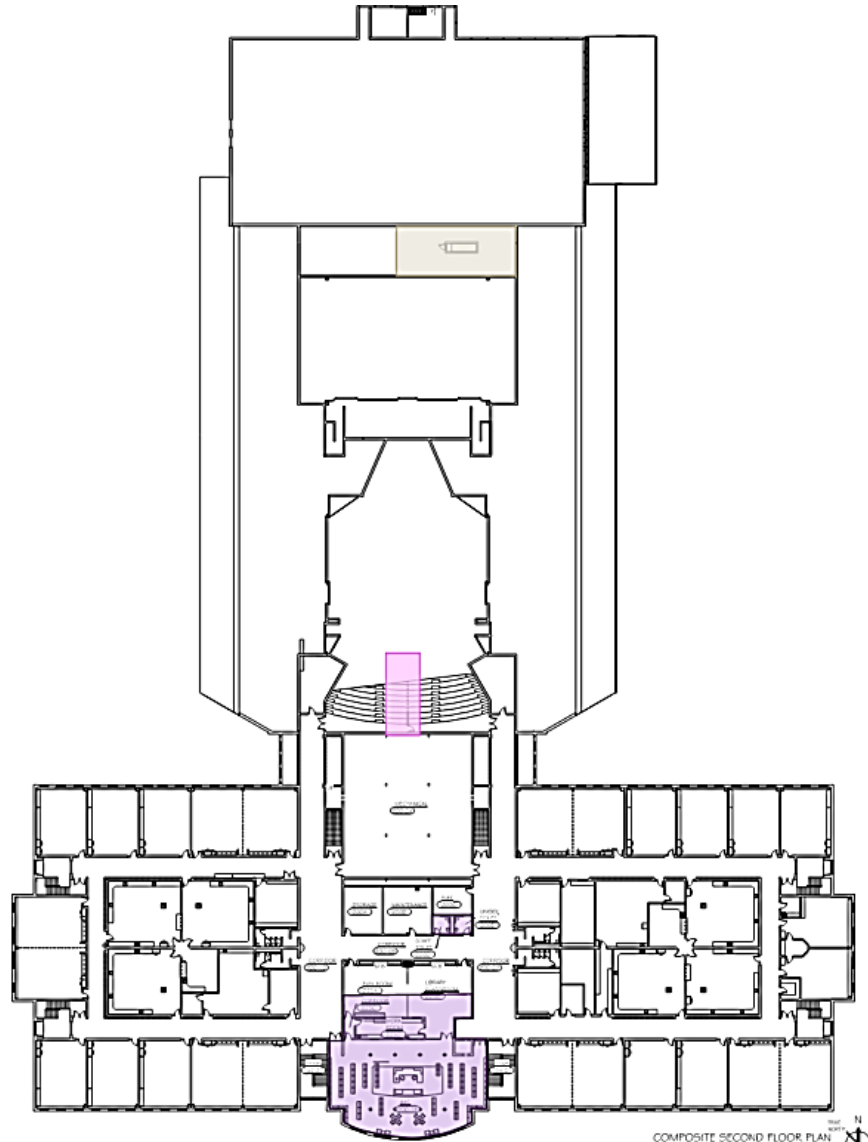


Key Plan





➤ Horace Mann 95% Design



Second Floor

Light Renovation

Medium Renovation

Heavy Renovation

New Addition

Updates/ Finishes

Areas of Work

- Library/ Flex rooms
- Toilets
- Electrical Work



➤ Horace Mann 95% Design

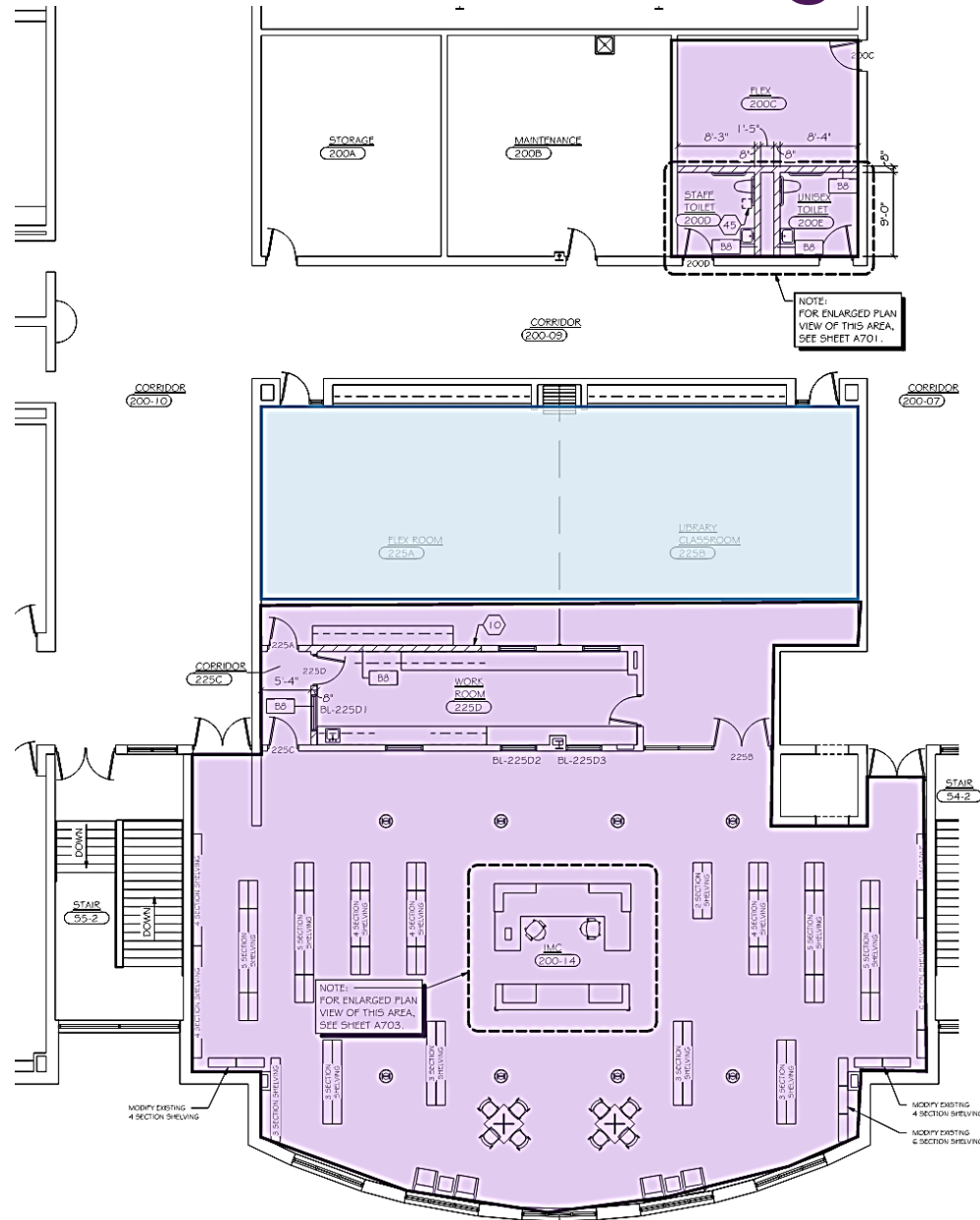
Design
Rendering

- IMC





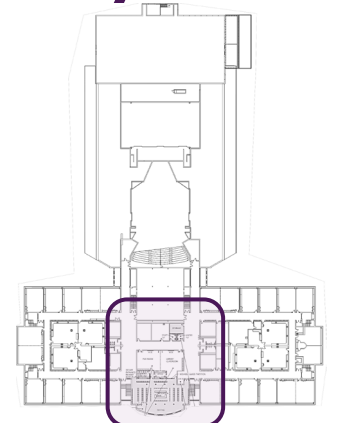
➤ Horace Mann 95% Design



Areas of Work

- Renovated library
- Flex rooms
- Unisex toilet rooms

Key Plan





➤ Horace Mann 95% Design

Mechanical Systems Summary

- Adding thermal equalizers to cafetorium and library.
- New Chilled/Hot Water AHU to serve fitness addition.
- New VAVs to serve office remodel.

Plumbing Systems Summary

- Modifying existing systems to fit remodeled spaces
- New showers
- New toilet room by front lobby



➤ Horace Mann 95% Design

Electrical Systems Summary

- Power, lighting, telecom and security renovations as needed for the new secure entry
- Power distribution, lighting, telecom and security design for fitness addition
- Power, lighting, telecom and security upgrades and modifications as needed for renovated areas
- Mass notification system modifications/extensions for remodeled areas and additions
- Replace existing generator and move to a code compliant location.
- Replace damaged pool MCC
- Electrical infrastructure for stage dimming system
- Schoolwide LED lighting upgrade
- Replace Fire Alarm System



➤ Horace Mann 95% Design - Alternates

Status	Base Description	Alternate Description
Future	Replace bookcases in library	
Pending	Redo Finishes and lighting in library	IMC Remodeling into Community Room, Classrooms/ IMC Relocation to Second Floor (Horace Mann)



2

Horace Mann Middle School

95% Budget Review



➤ Horace Mann 95% Budget Comparison

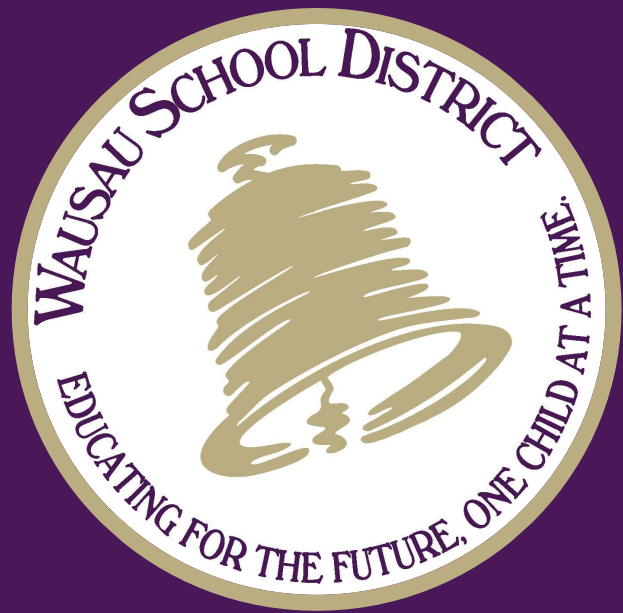
<u>Site</u>	<u>Original</u>	<u>95% Design</u>
Horace Mann MS	\$7,119,000	\$7,725,000



➤ Horace Mann Conclusion

Board Action

- Move forward to bid **Horace Mann Middle School – Additions and Renovations**
 - Approve plan designs for **Horace Mann Middle School**, as presented, to be issued for bidding



3

Questions