



WAUSAU SCHOOL DISTRICT  
Referendum Project Update  
50% Design Progress  
**East High School**

October 9, 2023





# Agenda

50% Design Review

1 East High School

2 Questions







# 1

East High School



# ➤ East High School Agenda/ Purpose of Presentation

## Our Purpose Today:

- Present current design and how it change from the initial referendum concepts.
- Approve design direction to continue project moving forward
- Approve changes indicated by restructuring



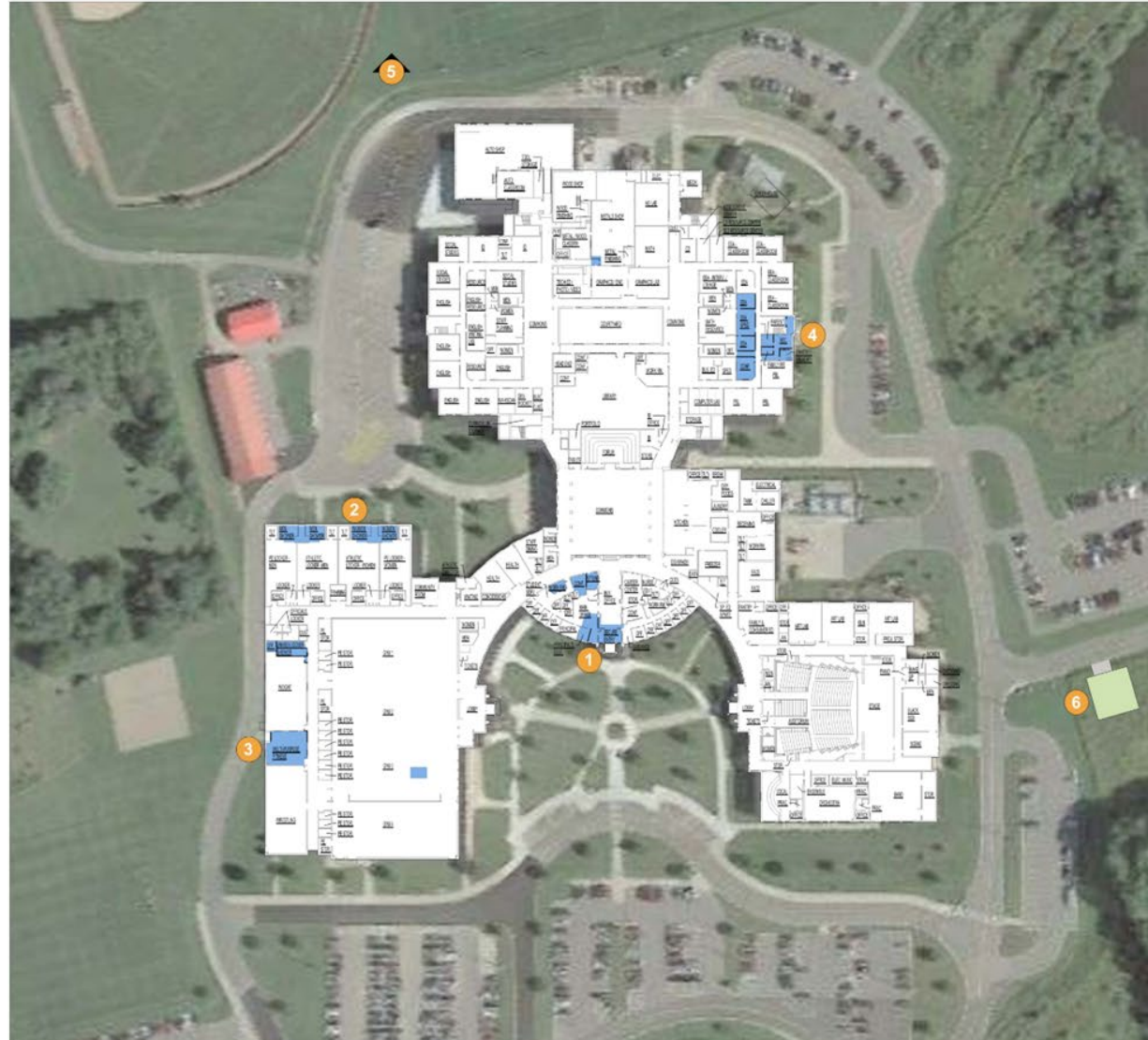
# East High School Referendum Concept

## Wausau East High School

Wausau, Wisconsin

- 1 Secure Main Office
- 2 Private Showers / Uni-Sex Changing Room
- 3 PE Fitness Center Remodeling
- 4 EEA Main Office / Special Education Remodeling
- 5 Athletic Field Lighting and Safety Netting
- 6 Storage Building - Theater, General

- DEFERRED MAINTENANCE
- REMODELING
- NEW ADDITION



FIRST FLOOR PLAN  
17.12.20 25' 00" 75'

## Noted Updates:

- Secure Main Entrance
- Private Showers/ Unisex Changing Rooms
- PE Fitness Center/ Remodeling
- EEA Main Office/ Special Education Remodeling
- Storage Building/ Theater/ General



# ➤ East High School District Staff Involvement

## District Involvement

### (5) Design Meetings

- District Leadership Team
- Building Design Committee
- Building Staff

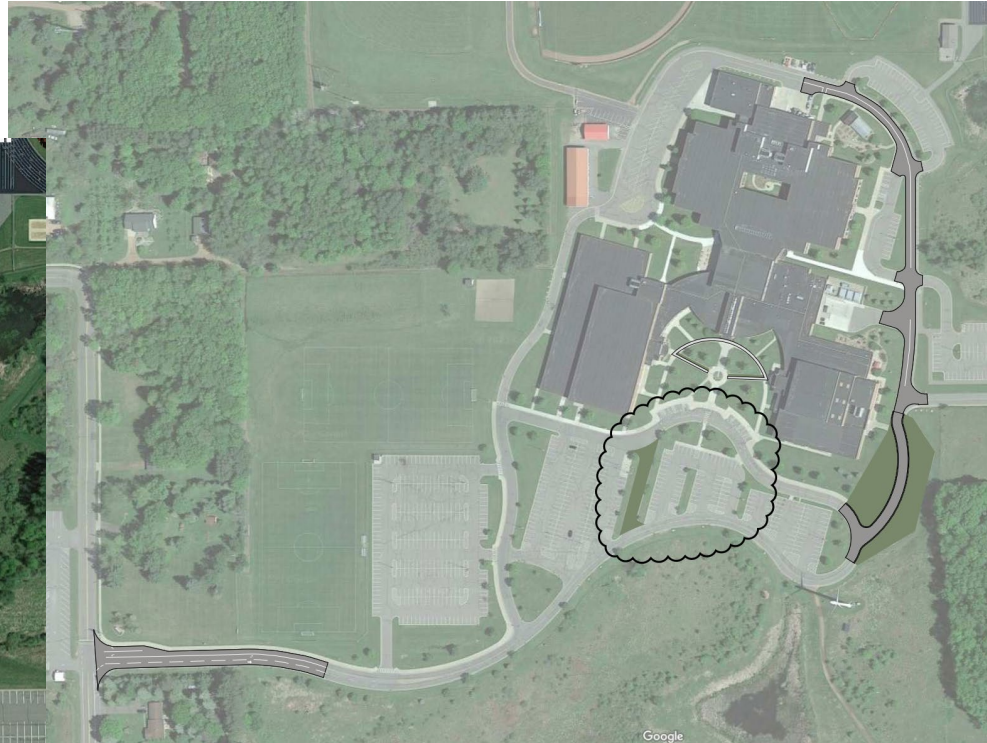




# East High School Site Work



Existing Site



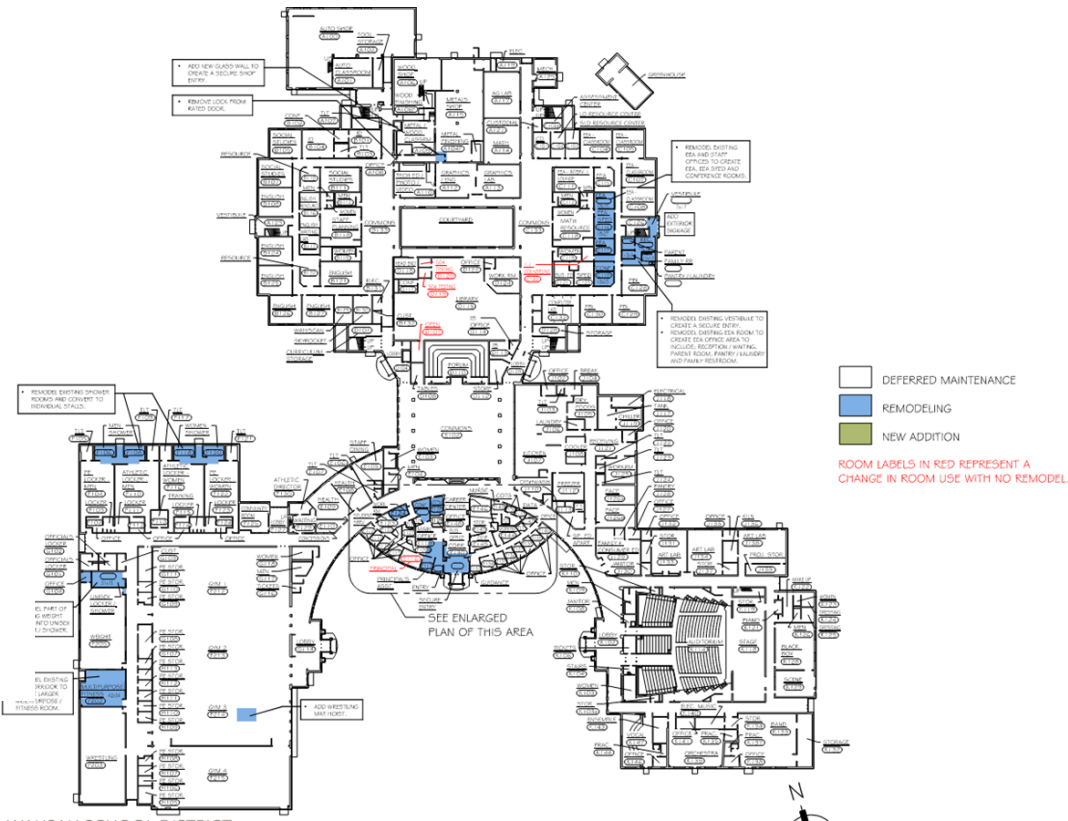
Current Concept

## Noted Updates

- Site Work
  - Remove asphalt scope to NW
  - Redo drive to East
- Pickup and drop off
  - Remove short cut drive
  - Remove parking to east
  - Redo drive aisle to East
- Theater storage building
  - Location and needs are still being worked through



# East High School Restructuring Updates



Referendum Concept



Current Concept

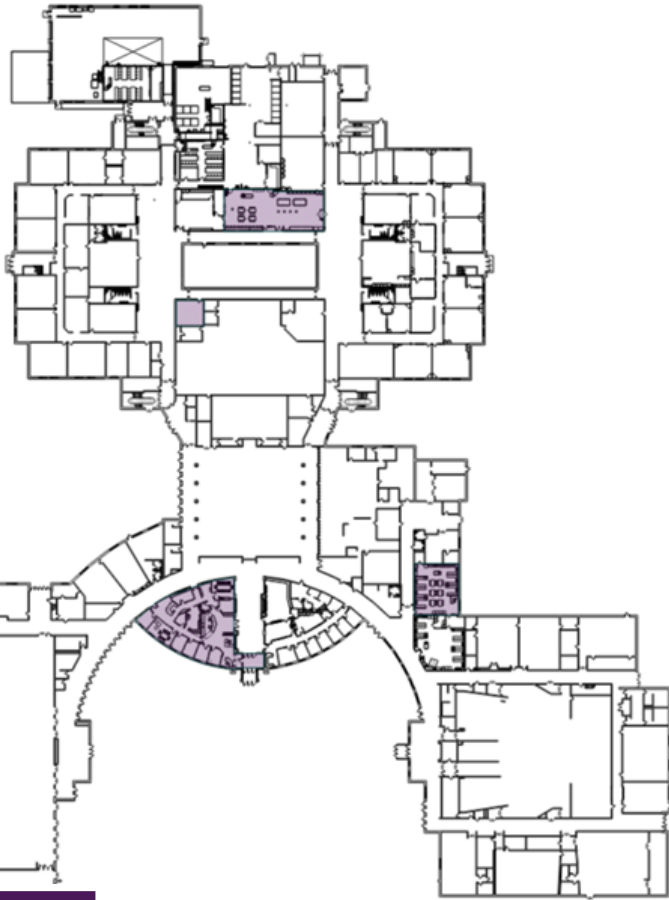
- Restructuring
  - Enrich Excel Achieve Learning Academy (EEA) office scope removed to another site
  - Add Foods Room
  - Add Graphic arts remodel



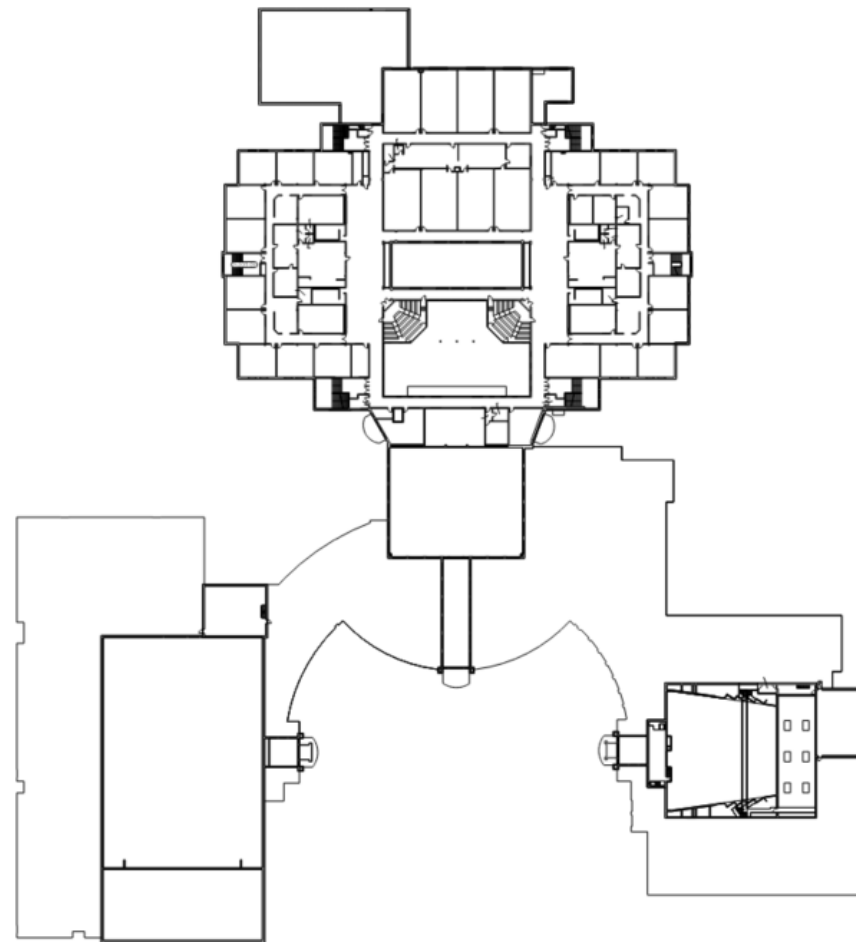


# East High School 50% Design

First Floor



Second Floor



Renovation

New Construction

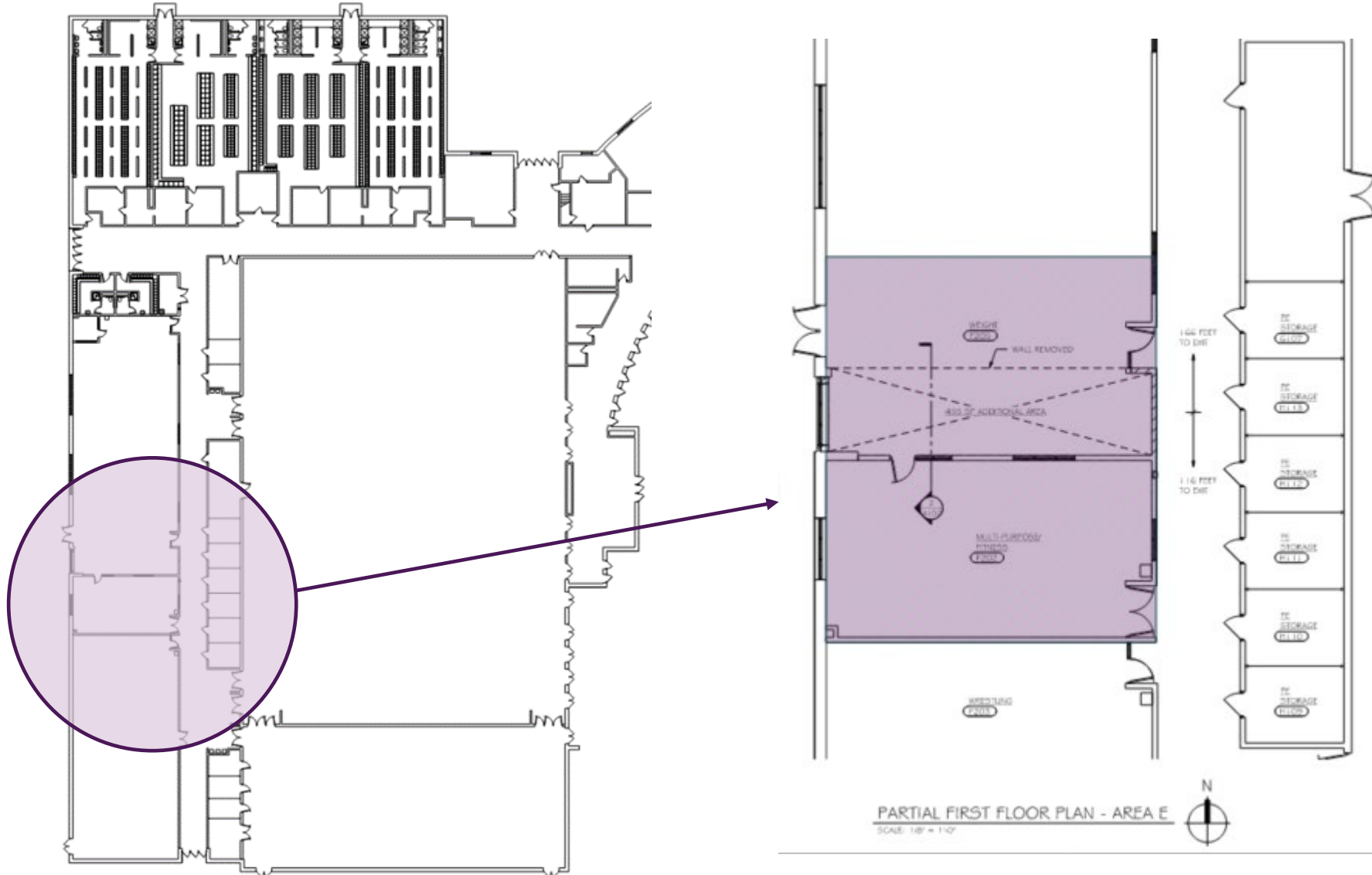
Updates/ Finishes

## Areas of Work:

- Miscellaneous work
  - Door and Window repair
  - Stage Curtains
  - Fire Protection for Data Closet
  - Misc Simple ADA upgrades
  - Unisex Toilets



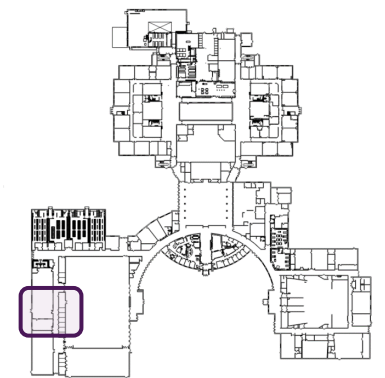
# East High School 50% Design



## Areas of work:

- Locker Rooms
  - Removed from scope
- Weight Room/  
Fitness Room
  - Changed corridor into part of weight room
  - Currently undergoing structural analysis

## Key Plan





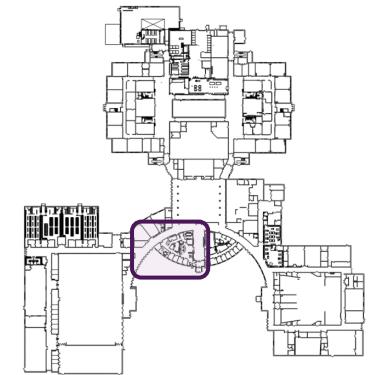
# East High School 50% Design



## Areas of work:

- Front Office
  - Secure Front Entrance
  - Principal
  - Assistant Principal
  - SRO
  - Work Room
  - Conference room
  - Business Office
  - Mail Room

## Key Plan







# ➤ East High School 50% Design



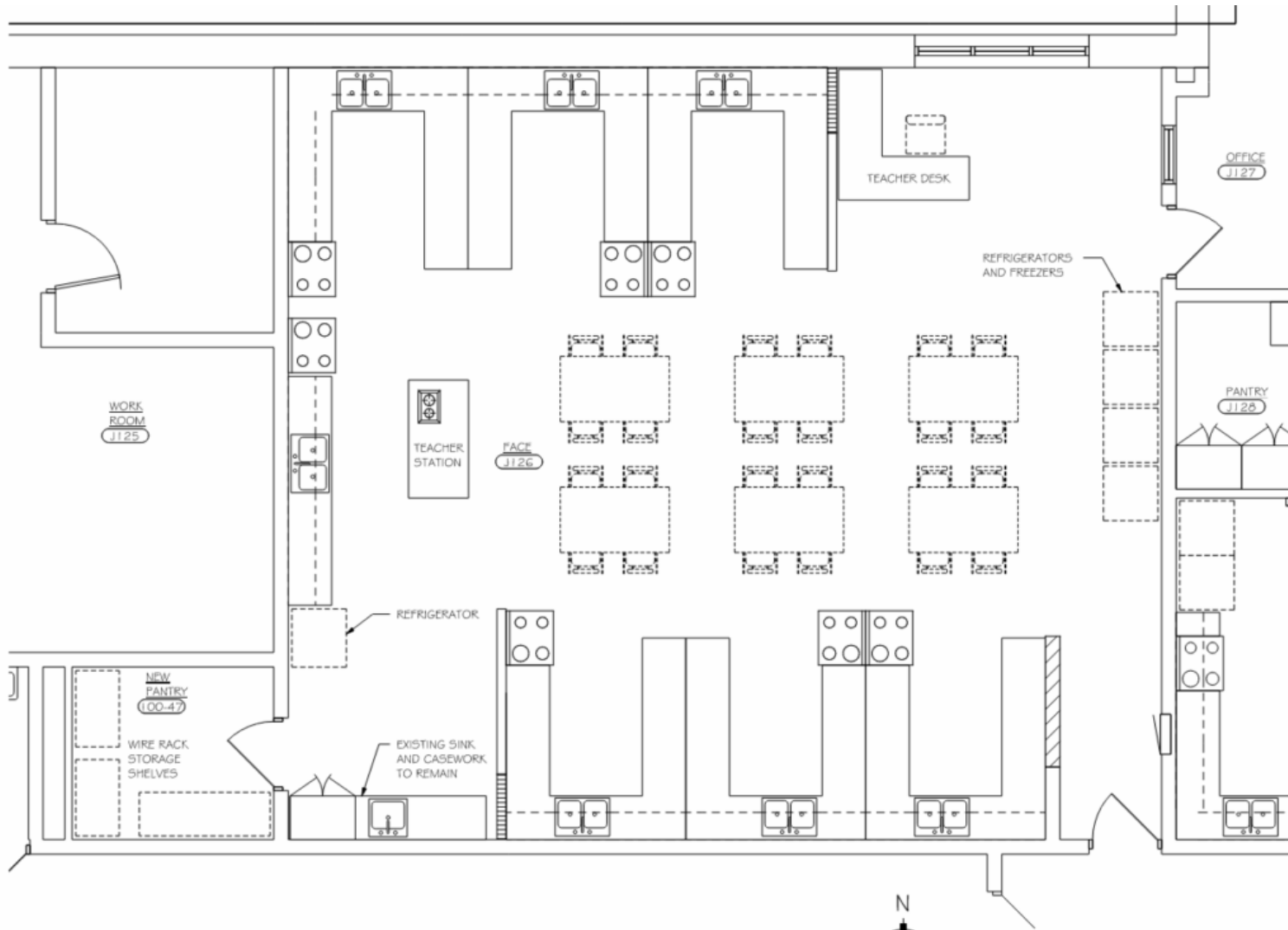
Current Photo



Preliminary Rendering



# East High School 50% Design

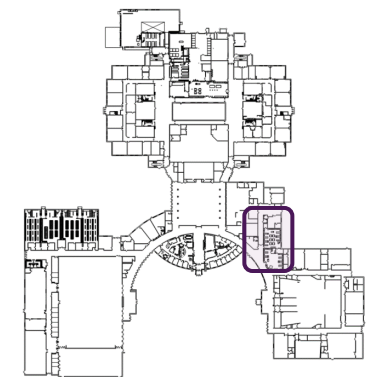


PARTIAL FIRST FLOOR PLAN - AREA G  
SCALE: 1/4" = 1'-0"

## Areas of work:

- Restructuring
- Food / Culinary Arts
  - 6 stations
  - Teaching station
  - ADA station

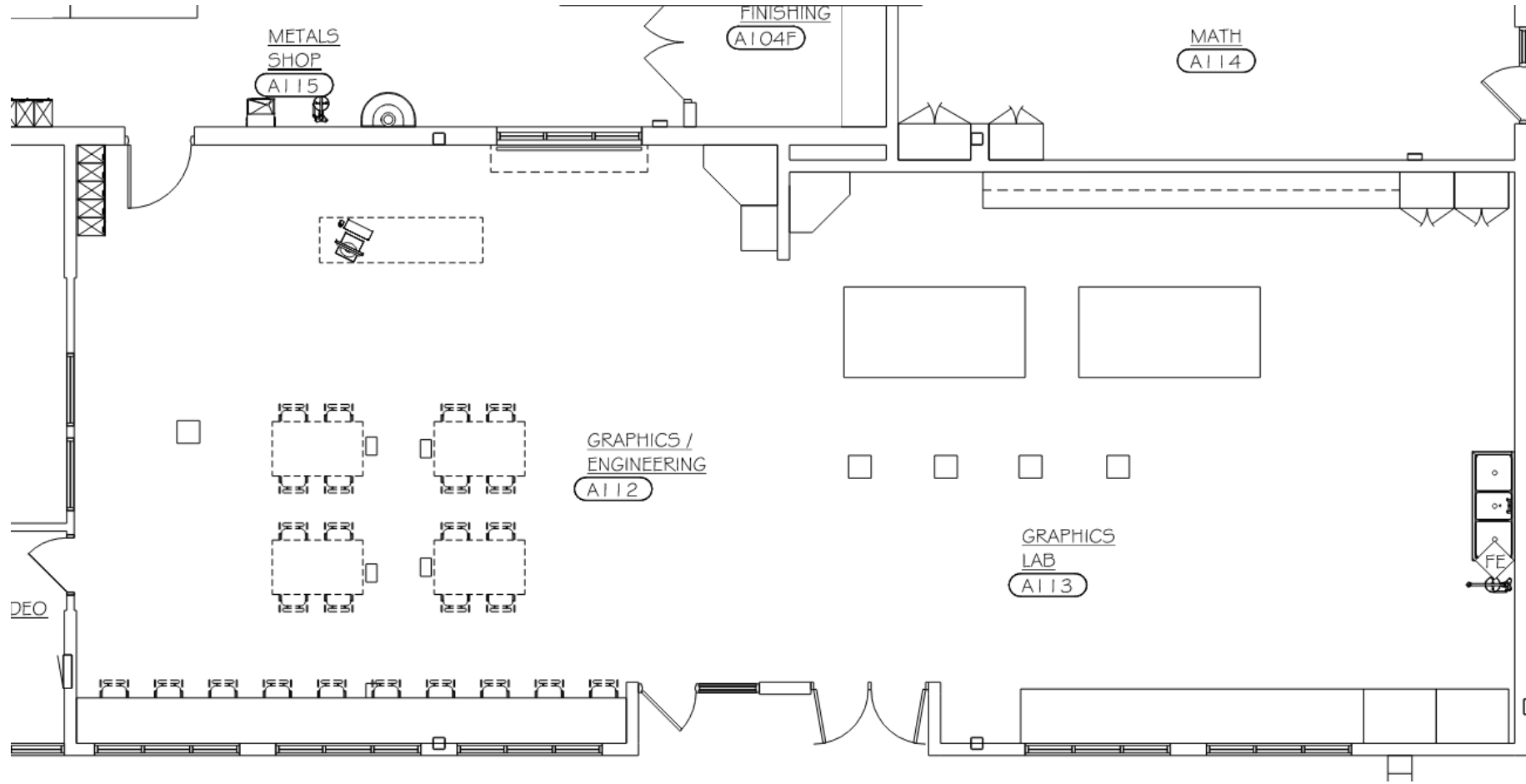
## Key Plan







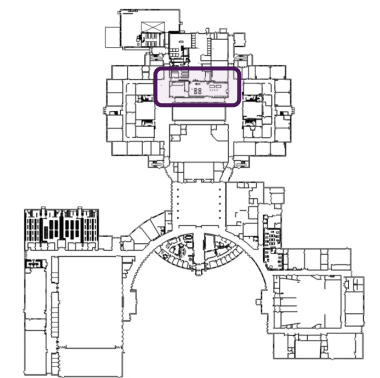
# East High School 50% Design



## Areas of work:

- Restructuring
- Fab Lab/  
Prototype Lab

## Key Plan







# East High School 50% Design

- **Mechanical/ Plumbing Systems Summary:**

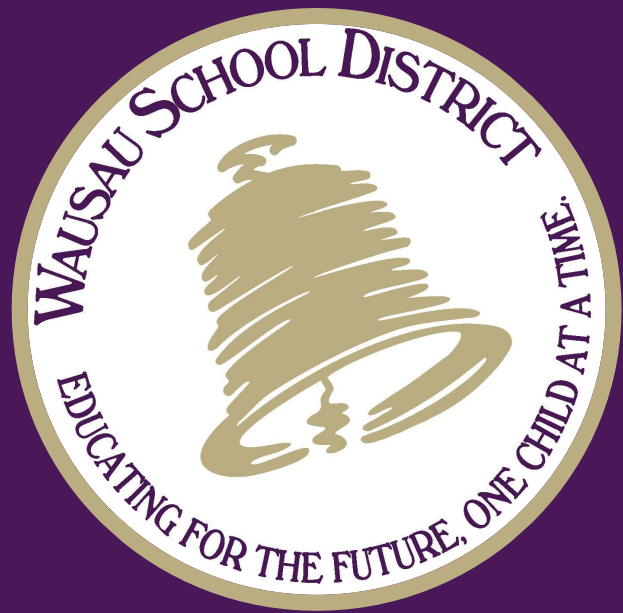
- No stand-alone scope.
- Modifying existing systems to fit remodeled spaces



# ➤ East High School 50% Design

## Electrical Systems Summary

- Power, lighting, telecom and security renovations as needed for the new secure entry
- Power, lighting, telecom and security upgrades and modifications as needed for renovated areas
- Replace non-functioning meters at main distribution panels
- Complete building fire alarm system replacement
- Public address system replacement with mass notification system
- Confirm: Mass Notification System
- Confirm: Fire Alarm System Replacement



# 2

## Questions